

À des fins de recherche uniquement

Anticorps Polyclonal de lapin anti-14-3-3 Epsilon



Numéro de catalogue: **CL555-11648**

Phare

Informations de base

Numéro de catalogue:

CL555-11648

Taille:

100ul, Concentration: 1000 µg/ml by Nanodrop;

Hôte:

Lapin

Isotype:

IgG

Immunogen Catalog Number:

AG2247

Numéro d'acquisition GenBank:

BC000179

Identification du gène (NCBI):

7531

Nom complet:

tyrosine 3-monooxygenase/tryptophan 5-monooxygenase activation protein, epsilon polypeptide

MW calculé

255 aa, 29 kDa

MW observés:

29-32 kDa

Méthode de purification:

Purification par affinité contre l'antigène

Excitation/Emission maxima wavelengths:

554 nm / 570 nm

Applications

Applications testées:

FC (Intra)

Spécificité de l'espèce:

Humain, rat, souris

Informations générales

14-3-3 Epsilon (also known as YWHAE) is a member of 14-3-3 proteins which were the first phosphoserine/phosphothreonine-binding proteins to be discovered. 14-3-3 family members interact with a wide spectrum of proteins and possess diverse functions. Mammals express seven distinct 14-3-3 isoforms (gamma, epsilon, beta, zeta, sigma, theta, tau) that form multiple homo- and hetero- dimmers. 14-3-3 proteins display the highest expression levels in the brain, and have been implicated in several neurodegenerative diseases, including Alzheimer's disease and amyotrophic lateral sclerosis. This antibody was raised against full-length 14-3-3 Epsilon.

Stockage

Stockage:

Stocker à -20 °C. Éviter toute exposition à la lumière. Stable pendant un an après l'expédition.

Tampon de stockage:

PBS avec glycérol à 50 %, Proclin300 à 0,05 % et BSA à 0,5 %, pH 7,3.

L'aliquotage n'est pas nécessaire pour le stockage à -20C

***** Les 20ul contiennent 0,1% de BSA.**

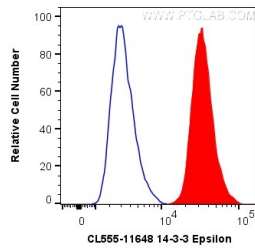
For technical support and original validation data for this product please contact:

T: 1 (888) 4PTGLAB (1-888-478-4522) (toll free in USA), or 1(312) 455-8498 (outside USA)

E: proteintech@ptglab.com
W: ptglab.com

This product is exclusively available under Proteintech Group brand and is not available to purchase from any other manufacturer.

Données de validation sélectionnées



1X10⁶ HepG2 cells were intracellularly stained with 0.2 ug CoraLite® Plus 555 Anti-Human 14-3-3 Epsilon (CL555-11648) (red), or 0.2 ug CoraLite® Plus 555 Rabbit IgG Control Antibody (CL555-30000) (Blue). Cells were fixed with 4% PFA and permeabilized with Flow Cytometry Perm Buffer (PF00011-C).