

À des fins de recherche uniquement

# Anticorps Polyclonal de lapin anti-ASGR1



Numéro de catalogue: **CL555-11739**

Phare

## Informations de base

Numéro de catalogue:

CL555-11739

Taille:

100ul, Concentration: 1000 µg/ml by

Nanodrop;

Hôte:

Lapin

Isotype:

IgG

Immunogen Catalog Number:

AG2310

Numéro d'acquisition GenBank:

BC032130

Identification du gène (NCBI):

432

Nom complet:

asialoglycoprotein receptor 1

MW calculé

291 aa, 33 kDa

Méthode de purification:

Purification par affinité contre l'antigène

Dilutions recommandées:

IF 1:50-1:500

Excitation/Emission maxima

wavelengths:

557 nm / 570nm

## Applications

Applications testées:

FC(Intra), IF

Spécificité de l'espèce:

Humain, rat, souris

Contrôles positifs:

IF : tissu de cancer du foie humain,

## Informations générales

Asialoglycoprotein receptor (ASGPR), also known as the hepatic galactose/N-acetylglucosamine (GlcNAc) receptor or Ashwell receptor, is a C-type lectin expressed exclusively in hepatic parenchymal cells. ASGPR consists of two subunits, a major subunit (ASGR1, HL-1) and a minor subunit (ASGR2, HL-2), and specifically recognizes terminal  $\beta$ -linked galactose or GlcNAc on circulating glycoproteins or cells. This receptor plays a critical role in serum glycoprotein homeostasis by mediating the endocytosis and lysosomal degradation of glycoproteins that contain terminal galactose or GlcNAc residues. ASGPR may facilitate hepatic infection by multiple viruses including hepatitis B, and is also a target for liver-specific drug delivery.

## Stockage

Stockage:

Stocker à -20 °C. Éviter toute exposition à la lumière. Stable pendant un an après l'expédition.

Tampon de stockage:

PBS avec glycérol à 50 %, Proclin300 à 0,05 % et BSA à 0,5 %, pH 7,3.

L'aliquotage n'est pas nécessaire pour le stockage à -20C

**\*\*\* Les 20ul contiennent 0,1% de BSA.**

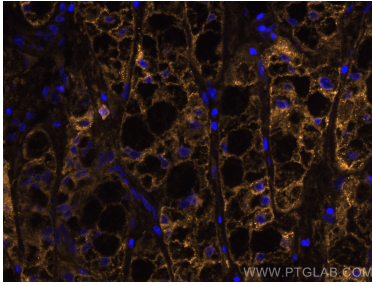
For technical support and original validation data for this product please contact:

T: 1 (888) 4PTGLAB (1-888-478-4522) (toll free in USA), or 1(312) 455-8498 (outside USA)

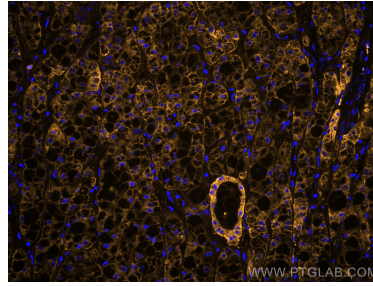
E: [proteintech@ptglab.com](mailto:proteintech@ptglab.com)  
W: [ptglab.com](http://ptglab.com)

**This product is exclusively available under Proteintech Group brand and is not available to purchase from any other manufacturer.**

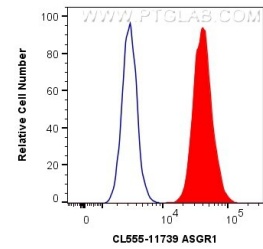
## Données de validation sélectionnées



Immunofluorescent analysis of (4% PFA) fixed human liver cancer tissue using CoraLite@555 ASGR1 antibody (CL555-11739) at dilution of 1:200.



Immunofluorescent analysis of (4% PFA) fixed human liver cancer tissue using CoraLite@555 ASGR1 antibody (CL555-11739) at dilution of 1:200.



$1 \times 10^6$  HepG2 cells were intracellularly stained with 0.4  $\mu$ g CoraLite@555 Anti-Human ASGR1 (CL555-11739) (red), or 0.4  $\mu$ g Control Antibody. Cells were fixed with 4% PFA and permeabilized with Flow Cytometry Perm Buffer (PF00011-C).