

À des fins de recherche uniquement

Anticorps Polyclonal de lapin anti-Beta-2-Microglobulin



Numéro de catalogue: CL555-13511

Informations de base

Numéro de catalogue: CL555-13511	Numéro d'acquisition GenBank: BC032589	Méthode de purification: Purification par affinité contre l'antigène
Taille: 100ul, Concentration: 1000 µg/ml by Nanodrop;	Identification du gène (NCBI): 567	Dilutions recommandées: IF 1:50-1:500
Hôte: Lapin	Nom complet: beta-2-microglobulin	Excitation/Emission maxima wavelengths: 557 nm / 570nm
Isotype: IgG	MW calculé: 119 aa, 14 kDa	
Immunogen Catalog Number: AG4433	MW observés: 12-14 kDa	

Applications

Applications testées: FC (Intra), IF	Contrôles positifs: IF : cellules A431,
Spécificité de l'espèce: Humain, rat, souris	

Informations générales

Beta-2-microglobulin (B2M) is a component of MHC class I molecules, which are present on the surface of nearly all nucleated cells. It can be found in body fluids under physiologic conditions as a result of shedding from cell surfaces or intracellular release. B2M has various biological functions, including antigen presentation. Investigations reveal that increased synthesis and release of B2M are present in several malignant diseases.

Stockage

Stockage:
Stocker à -20 °C. Éviter toute exposition à la lumière. Stable pendant un an après l'expédition.
Tampon de stockage:
PBS avec glycérol à 50 %, Proclin300 à 0,05 % et BSA à 0,5 %, pH 7,3.
L'aliquotage n'est pas nécessaire pour le stockage à -20C

***** Les 20ul contiennent 0,1% de BSA.**

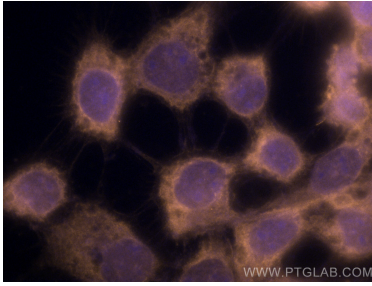
For technical support and original validation data for this product please contact:

T: 1 (888) 4PTGLAB (1-888-478-4522) (toll free in USA), or 1(312) 455-8498 (outside USA)

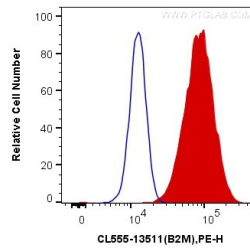
E: proteintech@ptglab.com
W: ptglab.com

This product is exclusively available under Proteintech Group brand and is not available to purchase from any other manufacturer.

Données de validation sélectionnées



Immunofluorescent analysis of (-20°C Ethanol) fixed A431 cells using CoraLite®555 Beta-2-Microglobulin antibody (CL555-13511) at dilution of 1:200.



1X10⁶ HeLa cells were intracellularly stained with 0.4 ug CoraLite®555 Anti-Human Beta-2-Microglobulin (CL555-13511) (red), or 0.4 ug Control Antibody. Cells were fixed with 4% PFA and permeabilized with Flow Cytometry Perm Buffer (PF00011-C).