

À des fins de recherche uniquement

Anticorps Polyclonal de lapin anti-Apolipoprotein A1



Numéro de catalogue: CL555-14427

Informations de base

Numéro de catalogue: CL555-14427	Numéro d'acquisition GenBank: BC005380	Méthode de purification: Purification par affinité contre l'antigène
Taille: 100ul , Concentration: 1000 µg/ml by Nanodrop;	Identification du gène (NCBI): 335	Excitation/Emission maxima wavelengths: 554 nm / 570 nm
Hôte: Lapin	Nom complet: apolipoprotein A-I	
Isotype: IgG	MW calculé: 31 kDa	
Immunogen Catalog Number: AG5793	MW observés: 26-30 kDa	

Applications

Applications testées:
FC (Intra)
Spécificité de l'espèce:
Humain, souris

Informations générales

ApoA1 is a major protein component of high density lipoproteins (HDL) which is associated with reversed cholesterol transport, lipid/cholesterol binding, lecithin/cholesterol acyltransferase (LCAT) activation and specific receptors binding. It is synthesized in the liver and small intestine. Defects of ApoA1 cause low HDL level and systemic non-neuropathic amyloidosis. Serum concentration of ApoA1 is inversely related to the risk of developing atherosclerosis. This antibody was generated against the C-terminal region of human ApoA1.

Stockage

Stockage:
Stocker à -20 °C. Éviter toute exposition à la lumière. Stable pendant un an après l'expédition.
Tampon de stockage:
PBS avec glycérol à 50 %, Proclin300 à 0,05 % et BSA à 0,5 %, pH 7,3.
L'aliquotage n'est pas nécessaire pour le stockage à -20C

***** Les 20ul contiennent 0,1% de BSA.**

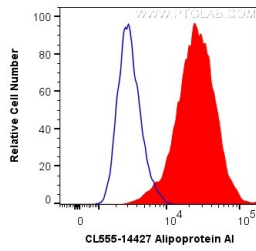
For technical support and original validation data for this product please contact:

T: 1 (888) 4PTGLAB (1-888-478-4522) (toll free in USA), or 1(312) 455-8498 (outside USA)

E: proteintech@ptglab.com
W: ptglab.com

This product is exclusively available under Proteintech Group brand and is not available to purchase from any other manufacturer.

Données de validation sélectionnées



1X10⁶ HepG2 cells were intracellularly stained with 0.2 ug CoraLite® Plus 555 Anti-Human Apolipoprotein AI (CL555-14427) (red), or 0.2 ug CoraLite® Plus 555 Rabbit IgG Control Antibody (CL555-30000) (Blue). Cells were fixed with 4% PFA and permeabilized with Flow Cytometry Perm Buffer (PF00011-C).