

À des fins de recherche uniquement

# Anticorps Polyclonal de lapin anti- ACLY



Numéro de catalogue: **CL555-15421** **Phare**

## Informations de base

Numéro de catalogue: CL555-15421	Numéro d'acquisition GenBank: BC006195	Méthode de purification: Purification par affinité contre l'antigène
Taille: 100ul , Concentration: 1 mg/mL by Nanodrop;	Identification du gène (NCBI): 47	Excitation/Emission maxima wavelengths: 554 nm / 570 nm
Hôte: Lapin	Nom complet: ATP citrate lyase	
Isotype: IgG	MW calculé 121 kDa	
Immunogen Catalog Number: AG7709	MW observés: 120 kDa	

## Applications

Applications testées:  
FC (Intra)  
Spécificité de l'espèce:  
Humain, rat, souris

## Informations générales

ACLY(ATP-citrate synthase) is also named as ACL. It is the primary enzyme responsible for the synthesis of cytosolic acetyl-CoA. ACLY serves as not only a target in oxygenated cells for suppression of lipid synthesis and histone acetylation, but also as a susceptible target in hypoxic cells to restore inhibition of glycolysis. In nonsmall cell lung carcinoma and hepatocellular carcinoma, ACLY is overexpressed compared with normal parenchyma suggesting that ACLY may represent a common target among highly malignant tumors(PMID:19795461). This protein has 2 isoforms produced by alternative splicing.

## Stockage

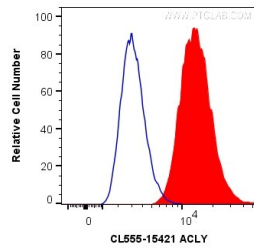
Stockage:  
Stocker à -20 °C. Éviter toute exposition à la lumière. Stable pendant un an après l'expédition.  
Tampon de stockage:  
PBS avec glycérol à 50 %, Proclin300 à 0,05 % et BSA à 0,5 %, pH 7,3.  
L'aliquotage n'est pas nécessaire pour le stockage à -20C

**\*\*\* Les 20ul contiennent 0,1% de BSA.**

For technical support and original validation data for this product please contact:  
T: 1 (888) 4PTGLAB (1-888-478-4522) (toll free in USA), or 1(312) 455-8498 (outside USA) E: [proteintech@ptglab.com](mailto:proteintech@ptglab.com) W: [ptglab.com](http://ptglab.com)

This product is exclusively available under Proteintech Group brand and is not available to purchase from any other manufacturer.

## Données de validation sélectionnées



1X10<sup>6</sup> A549 cells were intracellularly stained with 0.2 ug CoraLite® Plus 555 Anti-Human ACLY (CL555-15421) (red), or 0.2 ug CoraLite® Plus 555 Rabbit IgG Control Antibody (CL555-30000) (Blue). Cells were fixed with 4% PFA and permeabilized with Flow Cytometry Perm Buffer (PF00011-C).