

À des fins de recherche uniquement

# Anticorps Polyclonal de lapin anti-Cytokeratin 7



Numéro de catalogue: CL555-15539

## Informations de base

Numéro de catalogue: CL555-15539	Numéro d'acquisition GenBank: BC002700	Méthode de purification: Purification par affinité contre l'antigène
Taille: 100ul, Concentration: 1000 µg/ml by Nanodrop;	Identification du gène (NCBI): 3855	Dilutions recommandées: IF 1:200-1:800
Hôte: Lapin	Nom complet: keratin 7	Excitation/Emission maxima wavelengths: 557 nm / 570 nm
Isotype: IgG	MW calculé: 469 aa, 51 kDa	
Immunogen Catalog Number: AG7895	MW observés: 51 kDa	

## Applications

Applications testées: FC (Intra), IF	Contrôles positifs: IF : tissu de cancer du sein humain, cellules HeLa, cellules HepG2
Spécificité de l'espèce: Humain, rat, souris	

## Informations générales

Keratins are a large family of proteins that form the intermediate filament cytoskeleton of epithelial cells, which are classified into two major sequence types. Type I keratins are a group of acidic intermediate filament proteins, including K9-K23, and the hair keratins Ha1-Ha8. Type II keratins are the basic or neutral counterparts to the acidic type I keratins, including K1-K8, and the hair keratins, Hb1-Hb6. KRT7 is a type II keratin. It is specifically expressed in the simple epithelia lining the cavities of the internal organs and in the gland ducts and blood vessels.

## Stockage

**Stockage:**  
Stocker à -20 °C. Éviter toute exposition à la lumière. Stable pendant un an après l'expédition.  
**Tampon de stockage:**  
PBS avec glycérol à 50 %, Proclin300 à 0,05 % et BSA à 0,5 %, pH 7,3.  
L'aliquotage n'est pas nécessaire pour le stockage à -20C

**\*\*\* Les 20ul contiennent 0,1% de BSA.**

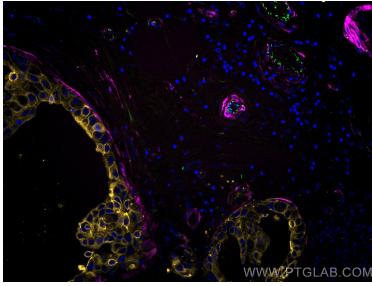
For technical support and original validation data for this product please contact:

T: 1 (888) 4PTGLAB (1-888-478-4522) (toll free in USA), or 1(312) 455-8498 (outside USA)

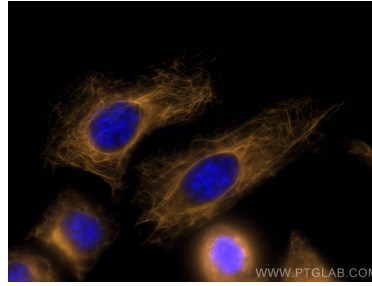
E: [proteintech@ptglab.com](mailto:proteintech@ptglab.com)  
W: [ptglab.com](http://ptglab.com)

**This product is exclusively available under Proteintech Group brand and is not available to purchase from any other manufacturer.**

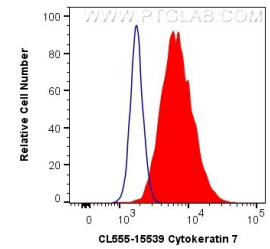
## Données de validation sélectionnées



Immunofluorescent analysis of (4% PFA) fixed human breast cancer tissue using CoraLite®555 Cytokeratin 7 antibody (CL555-15539) at dilution of 1:800, CoraLite® Plus 647 smooth muscle actin specific antibody (CL647-67735, Clone: 1E9A11, Magenta), CoraLite®488 CD31 antibody (CL488-11265, green).



Immunofluorescent analysis of (-20°C Ethanol) fixed HepG2 cells using CoraLite®555 Cytokeratin 7 antibody (CL555-15539) at dilution of 1:200.



1X10<sup>6</sup> HeLa cells were intracellularly stained with 0.4 ug CoraLite®555 Anti-Human Cytokeratin 7 (CL555-15539) (red), or 0.4 ug Control Antibody. Cells were fixed with 4% PFA and permeabilized with Flow Cytometry Perm Buffer (PF00011-C).