

À des fins de recherche uniquement

Anticorps Polyclonal de lapin anti-Cytokeratin 17-Specific



Numéro de catalogue: CL555-17516

Phare

Informations de base

Numéro de catalogue:
CL555-17516

Taille:
100ul, Concentration: 1000 µg/ml by
Nanodrop;

Hôte:
Lapin

Isotype:
IgG

Numéro d'acquisition GenBank:
NM_000422

Identification du gène (NCBI):

Nom complet:
keratin 17

MW calculé
48 kDa

Méthode de purification:
Purification par affinité contre
l'antigène

Dilutions recommandées:
IF 1:50-1:500

Excitation/Emission maxima
wavelengths:
557 nm / 570nm

Applications

Applications testées:
FC (Intra), IF

Spécificité de l'espèce:
Humain, souris

Contrôles positifs:

IF : cellules HeLa,

Informations générales

Keratins are a large family of proteins that form the intermediate filament cytoskeleton of epithelial cells, which are classified into two major sequence types. Type I keratins are a group of acidic intermediate filament proteins, including K9-K23, and the hair keratins Ha1-Ha8. Type II keratins are the basic or neutral counterparts to the acidic type I keratins, including K1-K8, and the hair keratins, Hb1-Hb6. Keratin 17 is a type I cytokeratin. It is found in nail beds, hair follicles, sebaceous glands, and other epidermal appendages. It is used as a marker for trauma. This antibody is specifically against KRT17.

Stockage

Stockage:

Stocker à -20 °C. Éviter toute exposition à la lumière.

Tampon de stockage:

PBS avec glycérol à 50 %, Proclin300 à 0,05 % et BSA à 0,5 %, pH 7,3.

L'aliquotage n'est pas nécessaire pour le stockage à -20C

***** Les 20ul contiennent 0,1% de BSA.**

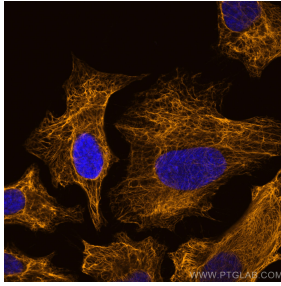
For technical support and original validation data for this product please contact:

T: 1 (888) 4PTGLAB (1-888-478-4522) (toll free
in USA), or 1(312) 455-8498 (outside USA)

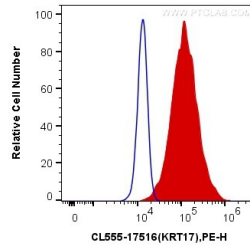
E: proteintech@ptglab.com
W: ptglab.com

This product is exclusively available under Proteintech Group brand and is not available to purchase from any other manufacturer.

Données de validation sélectionnées



Immunofluorescent analysis of (-20°C Methanol) fixed HeLa cells using CoraLite®555 Cytokeratin 17-Specific antibody (CL555-17516) at dilution of 1:200.



1X10⁶ HeLa cells were intracellularly stained with 0.4 ug CoraLite®555 Anti-Human Cytokeratin 17-Specific (CL555-17516) (red), or 0.4 ug Control Antibody. Cells were fixed with 4% PFA and permeabilized with Flow Cytometry Perm Buffer (PF00011-C).