

À des fins de recherche uniquement

Anticorps Polyclonal de lapin anti-Cytokeratin 10



Numéro de catalogue: **CL555-18343**

Informations de base

Numéro de catalogue:	CL555-18343	Numéro d'acquisition GenBank:	BC034697	Méthode de purification:	Purification par affinité contre l'antigène
Taille:	100ul , Concentration: 1000 µg/ml by Nanodrop;	Identification du gène (NCBI):	3858	Excitation/Emission maxima wavelengths:	554 nm / 570 nm
Hôte:	Lapin	Nom complet:	keratin 10		
Isotype:	IgG	MW calculé	584 aa, 59 kDa		
Immunogen Catalog Number:	AG13136				

Applications

Applications testées:
FC (Intra)
Spécificité de l'espèce:
Humain, rat, souris

Informations générales

Keratins are a large family of proteins that form the intermediate filament cytoskeleton of epithelial cells, which are classified into two major sequence types. Type I keratins are a group of acidic intermediate filament proteins, including K9-K23, and the hair keratins Ha1-Ha8. Type II keratins are the basic or neutral counterparts to the acidic type I keratins, including K1-K8, and the hair keratins, Hb1-Hb6. As a type I keratin, keratin 10 is a suprabasal marker of differentiation in stratified squamous epithelia.

Stockage

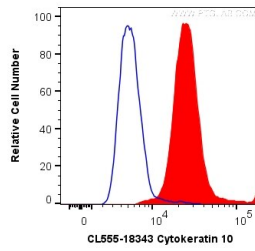
Stockage:
Stocker à -20 °C. Éviter toute exposition à la lumière. Stable pendant un an après l'expédition.
Tampon de stockage:
PBS avec glycérol à 50 %, Proclin300 à 0,05 % et BSA à 0,5 %, pH 7,3.
L'aliquotage n'est pas nécessaire pour le stockage à -20C

***** Les 20ul contiennent 0,1% de BSA.**

For technical support and original validation data for this product please contact:
T: 1 (888) 4PTGLAB (1-888-478-4522) (toll free in USA), or 1(312) 455-8498 (outside USA) E: proteintech@ptglab.com W: ptglab.com

This product is exclusively available under Proteintech Group brand and is not available to purchase from any other manufacturer.

Données de validation sélectionnées



1X10⁶ A431 cells were intracellularly stained with 0.5 ug CoraLite® Plus 555 Anti-Human Cytokeratin 10 (CL555-18343) (red), or 0.5 ug CL555 Rabbit Isotype Control Antibody (CL555-30000) (blue). Cells were fixed with 4% PFA and permeabilized with Flow Cytometry Perm Buffer (PF00011-C).