

À des fins de recherche uniquement

Anticorps Polyclonal de lapin anti-pan-keratin



Numéro de catalogue: **CL555-26411**

Informations de base

Numéro de catalogue:

CL555-26411

Numéro d'acquisition GenBank:

BC024292

Méthode de purification:

Purification par affinité contre l'antigène

Taille:

100ul, Concentration: 1000 µg/ml by

Nanodrop;

Identification du gène (NCBI):

3852

Dilutions recommandées:

IF 1:50-1:500

Hôte:

Lapin

Nom complet:

keratin 5

Excitation/Emission maxima

wavelengths:

557 nm / 570nm

Isotype:

IgG

MW calculé

590 aa, 62 kDa

Immunogen Catalog Number:

AG24184

Applications

Applications testées:

IF

Spécificité de l'espèce:

Humain

Contrôles positifs:

IF : tissu de cancer du côlon humain, tissu de cancer du poumon humain, tissu de cancer du sein humain

Informations générales

Keratins are a large family of proteins that form the intermediate filament cytoskeleton of epithelial cells, which are classified into two major sequence types. Type I keratins are a group of acidic intermediate filament proteins, including K9-K23, and the hair keratins Ha1-Ha8. Type II keratins are the basic or neutral counterparts to the acidic type I keratins, including K1-K8, and the hair keratins, Hb1-Hb6. Keratin isoforms demonstrate tissue- and differentiation-specific profiles that make them useful as research biomarkers. Research studies have shown that mutations in keratin genes are associated with skin disorders, liver and pancreatic diseases, and inflammatory intestinal diseases. This antibody is a pan-keratin antibody.

Stockage

Stockage:

Stocker à -20 °C. Éviter toute exposition à la lumière. Stable pendant un an après l'expédition.

Tampon de stockage:

PBS avec glycérol à 50 %, Proclin300 à 0,05 % et BSA à 0,5 %, pH 7,3.

L'aliquotage n'est pas nécessaire pour le stockage à -20C

***** Les 20ul contiennent 0,1% de BSA.**

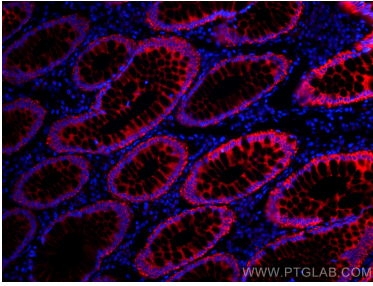
For technical support and original validation data for this product please contact:

T: 1 (888) 4PTGLAB (1-888-478-4522) (toll free in USA), or 1(312) 455-8498 (outside USA)

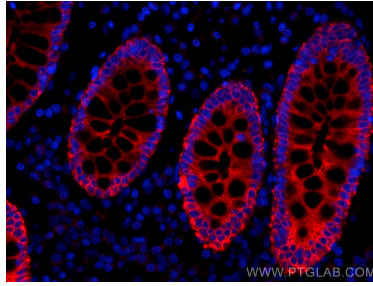
E: proteintech@ptglab.com
W: ptglab.com

This product is exclusively available under Proteintech Group brand and is not available to purchase from any other manufacturer.

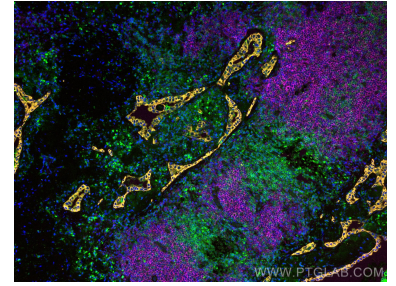
Données de validation sélectionnées



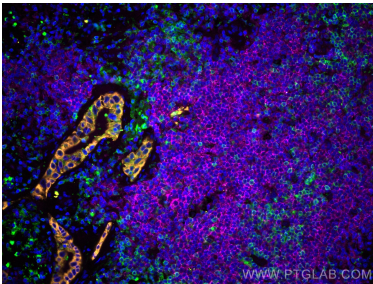
Immunofluorescent analysis of (4% PFA) fixed human colon cancer tissue using CoraLite®555 pan-keratin antibody (CL555-26411) at dilution of 1:200.



Immunofluorescent analysis of (4% PFA) fixed human colon cancer tissue using CoraLite®555 pan-keratin antibody (CL555-26411) at dilution of 1:200.



Immunofluorescent analysis of (4% PFA) fixed human lung cancer tissue using CoraLite®555 pan-keratin antibody (CL555-26411) at dilution of 1:200, CoraLite® Plus 488 CD3 antibody (CL488-60181, Clone: 3F3A1, green), CoraLite® Plus 647 CD20 antibody (CL647-60271, Clone: 4A7G3, Magenta).



Immunofluorescent analysis of (4% PFA) fixed human lung cancer tissue using CoraLite®555 pan-keratin antibody (CL555-26411) at dilution of 1:200, CoraLite® Plus 488 CD3 antibody (CL488-60181, Clone: 3F3A1, green), CoraLite® Plus 647 CD20 antibody (CL647-60271, Clone: 4A7G3, Magenta).