

À des fins de recherche uniquement

# Anticorps Polyclonal de lapin anti-calreticulin



Numéro de catalogue: **CL555-27298**

Phare

## Informations de base

Numéro de catalogue: CL555-27298	Numéro d'acquisition GenBank: BC002500	Méthode de purification: Purification par affinité contre l'antigène
Taille: 100ul , Concentration: 1000 ug/ml by Nanodrop;	Identification du gène (NCBI): 811	Excitation/Emission maxima wavelengths: 554 nm / 570 nm
Hôte: Lapin	Nom complet: calreticulin	
Isotype: IgG	MW calculé: 60 kDa	
Immunogen Catalog Number: AG26064	MW observés: 55 kDa	

## Applications

Applications testées:  
FC (Intra)

Spécificité de l'espèce:  
Humain, rat, souris

## Informations générales

CALR, also named as grp60, ERp60, HACBP, CRP55, CRTC and Calregulin, belongs to the calreticulin family. It is a molecular calcium-binding chaperone promoting folding, oligomeric assembly and quality control in the ER via the calreticulin/calnexin cycle. CALR is an ER marker. It interacts transiently with almost all of the monoglucosylated glycoproteins that are synthesized in the ER. CALR interacts with the DNA-binding domain of NR3C1 and mediates its nuclear export. The MW of CALR migrates aberrantly at 60 kD by SDS-PAGE. Some study provided that it's a new possibility for CRT-mediated tumor immune prevention and treatment.

## Stockage

Stockage:  
Stocker à -20 °C. Éviter toute exposition à la lumière. Stable pendant un an après l'expédition.

Tampon de stockage:  
PBS avec glycérol à 50 %, Proclin300 à 0,05 % et BSA à 0,5 %, pH 7,3.  
L'aliquotage n'est pas nécessaire pour le stockage à -20C

**\*\*\* Les 20ul contiennent 0,1% de BSA.**

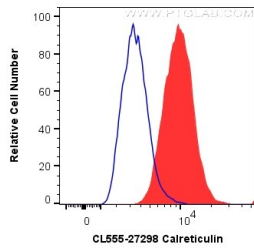
For technical support and original validation data for this product please contact:

T: 1 (888) 4PTGLAB (1-888-478-4522) (toll free in USA), or 1(312) 455-8498 (outside USA)

E: [proteintech@ptglab.com](mailto:proteintech@ptglab.com)  
W: [ptglab.com](http://ptglab.com)

**This product is exclusively available under Proteintech Group brand and is not available to purchase from any other manufacturer.**

## Données de validation sélectionnées



1X10<sup>6</sup> NIH/3T3 cells were intracellularly stained with 0.2 ug CoraLite® Plus 555 Anti-Human calreticulin (CL555-27298) (red), or 0.2 ug CoraLite® Plus 555 Rabbit IgG Control Antibody (CL555-30000)(Blue). Cells were fixed and permeabilized with Transcription Factor Staining Buffer Kit (PF00011).