

À des fins de recherche uniquement

Anticorps Polyclonal de lapin anti-IRE1; ERN1



Numéro de catalogue: **CL555-27528**

Informations de base

Numéro de catalogue: CL555-27528	Numéro d'acquisition GenBank: BC130405	Méthode de purification: Purification par affinité contre l'antigène
Taille: 100ul , Concentration: 1000 µg/ml by Nanodrop;	Identification du gène (NCBI): 2081	Excitation/Emission maxima wavelengths: 557 nm / 570 nm
Hôte: Lapin	Nom complet: endoplasmic reticulum to nucleus signaling 1	
Isotype: IgG	MW calculé 977 aa, 110 kDa	
Immunogen Catalog Number: AG25580	MW observés: 130 kDa	

Applications

Applications testées:
FC (Intra)
Spécificité de l'espèce:
Humain

Informations générales

Inositol-requiring enzyme 1 (IRE1) is an ER transmembrane sensor that activates the UPR to maintain the ER and cellular function. Although mammalian IRE1 promotes cell survival, it can initiate apoptosis via decay of antiapoptotic miRNAs. IRE1 contains a ribonuclease domain in its cytoplasmic region which initiates splicing reaction by direct cleavage of XBP1 mRNA at the two stem loop structures. IRE1 plays instrumental protumoral roles in several cancers, and high IRE1 activity has been associated with poorer prognoses. (PMID: 23880584, PMID: 32861679, PMID: 31875595)

Stockage

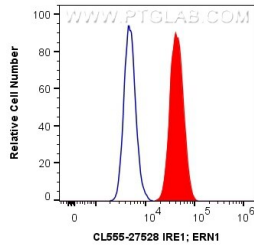
Stockage:
Stocker à -20 °C. Éviter toute exposition à la lumière. Stable pendant un an après l'expédition.
Tampon de stockage:
PBS avec glycérol à 50 %, Proclin300 à 0,05 % et BSA à 0,5 %, pH 7,3.
L'aliquotage n'est pas nécessaire pour le stockage à -20C

***** Les 20ul contiennent 0,1% de BSA.**

For technical support and original validation data for this product please contact:
T: 1 (888) 4PTGLAB (1-888-478-4522) (toll free in USA), or 1(312) 455-8498 (outside USA) E: proteintech@ptglab.com W: ptglab.com

This product is exclusively available under Proteintech Group brand and is not available to purchase from any other manufacturer.

Données de validation sélectionnées



1X10⁶ A549 cells were intracellularly stained with 0.8 ug CoraLite®555 Anti-Human IRE1; ERN1 (CL555-27528) (red), or 0.8 ug CoraLite®555-conjugated Rabbit IgG control Rabbit PolyAb (CL555-30000, Clone:) (blue). Cells were fixed with 4% PFA and permeabilized with Flow Cytometry Perm Buffer (PF00011-C).