

À des fins de recherche uniquement

Anticorps Polyclonal de lapin anti-Beta Catenin



Numéro de catalogue: CL555-51067

Phare

Informations de base

Numéro de catalogue: CL555-51067	Numéro d'acquisition GenBank: BC058926	Méthode de purification: Purification par affinité contre l'antigène
Taille: 100ul , Concentration: 1000 µg/ml by Nanodrop;	Identification du gène (NCBI): 1499	Dilutions recommandées: IF 1:50-1:500
Hôte: Lapin	Nom complet: catenin (cadherin-associated protein), beta 1, 88kDa	Excitation/Emission maxima wavelengths: 557 nm / 570nm
Isotype: IgG	MW calculé: 781 aa, 86 kDa	
	MW observés: 92 kDa	

Applications

Applications testées:

IF

Spécificité de l'espèce:

Humain, porc, rat, souris

Contrôles positifs:

IF : cellules MCF-7, tissu de cancer du foie humain

Informations générales

β -Catenin, also known as CTNNB1, is an evolutionarily conserved, multifunctional intracellular protein. β -Catenin is a 92-kDa protein, originally identified in cell adherens junctions (AJs) where it functions to bridge the cytoplasmic domain of cadherins to α -catenin and the actin cytoskeleton. Besides its essential role in the AJs, β -catenin is also a key downstream component of the canonical Wnt pathway that plays diverse and critical roles in embryonic development and adult tissue homeostasis. The Wnt/ β -catenin pathway is also involved in the activation of other intracellular messengers such as calcium fluxes, JNK, and SRC kinases. Deregulation of β -catenin activity is associated with multiple diseases including cancers. (PMID: 22617422; 18334222)

Stockage

Stockage:

Stocker à -20 °C. Éviter toute exposition à la lumière. Stable pendant un an après l'expédition.

Tampon de stockage:

PBS avec glycérol à 50 %, Proclin300 à 0,05 % et BSA à 0,5 %, pH 7,3.

L'aliquotage n'est pas nécessaire pour le stockage à -20C

***** Les 20ul contiennent 0,1% de BSA.**

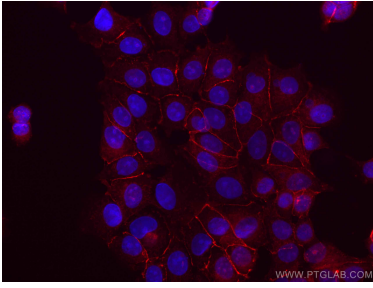
For technical support and original validation data for this product please contact:

T: 1 (888) 4PTGLAB (1-888-478-4522) (toll free in USA), or 1(312) 455-8498 (outside USA)

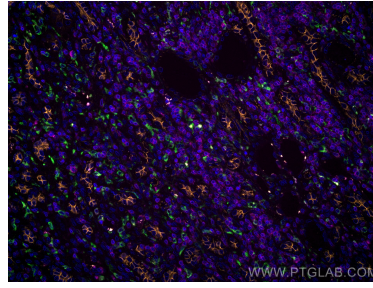
E: proteintech@ptglab.com
W: ptglab.com

This product is exclusively available under Proteintech Group brand and is not available to purchase from any other manufacturer.

Données de validation sélectionnées



Immunofluorescent analysis of (-20°C Methanol) fixed MCF-7 cells using CoraLite®555 Beta Catenin antibody (CL555-51067) at dilution of 1:100.



Immunofluorescent analysis of (4% PFA) fixed human liver cancer tissue using CoraLite®555 Beta Catenin antibody (CL555-51067) at dilution of 1:100, CoraLite® Plus 647 CD3 antibody (CL647-60181, Clone: 3F3A1, Magenta), CoraLite® Plus 488 CD163 antibody (CL488-16646, green).