

À des fins de recherche uniquement

# Anticorps Monoclonal anti-B23/NPM1



Numéro de catalogue: CL555-60096

Phare

1 Publications

## Informations de base

<b>Numéro de catalogue:</b> CL555-60096	<b>Numéro d'acquisition GenBank:</b> BC002398	<b>Méthode de purification:</b> Purification par protéine G
<b>Taille:</b> 100ul , Concentration: 1000 µg/ml by Nanodrop;	<b>Identification du gène (NCBI):</b> 4869	<b>CloneNo.:</b> 4F12A3
<b>Hôte:</b> Mouse	<b>Nom complet:</b> nucleophosmin (nucleolar phosphoprotein B23, numatrin)	<b>Dilutions recommandées:</b> IF 1:500-1:2000
<b>Isotype:</b> IgG1	<b>MW calculé:</b> 33 kDa	<b>Excitation/Emission maxima wavelengths:</b> 557 nm / 570nm
<b>Immunogen Catalog Number:</b> AG7415	<b>MW observés:</b> 35-38 kDa	

## Applications

<b>Applications testées:</b> FC (Intra), IF	<b>Contrôles positifs:</b> IF : cellules HepG2,
<b>Demandes citées:</b> IF	
<b>Spécificité de l'espèce:</b> Humain, rat, souris	
<b>Espèces citées:</b> Humain	

## Informations générales

Nucleophosmin (NPM1,B23) is a putative ribosome assembly factor with a high affinity for peptides containing nuclear localization signals (NLSs). The transport of proteins across the nuclear envelope is a selective, multistep process involving several cytoplasmic factors. Proteins must be recognized as import substrates, dock at the nuclear pore complex and translocate across the nuclear envelope in an ATP-dependent fashion. Several cytosolic and nuclear proteins that are central to this process have been identified. The 38 kDa nuclear protein nucleophosmin is involved in ribosomal assembly and rRNA transport. It is an abundant protein that is highly phosphorylated by Cdc2 kinase during mitosis.

## Publications notables

Autrice	Pubmed ID	Journal	Application
Tamami Miyagi	37332605	iScience	IF

## Stockage

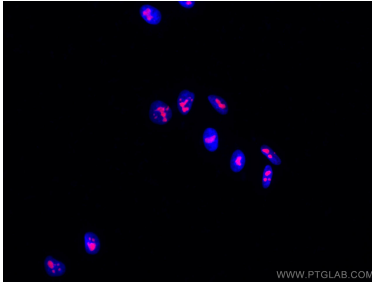
**Stockage:**  
Stocker à -20 °C. Éviter toute exposition à la lumière.  
**Tampon de stockage:**  
PBS avec glycérol à 50 %, Proclin300 à 0,05 % et BSA à 0,5 %, pH 7,3.  
L'aliquotage n'est pas nécessaire pour le stockage à -20C

\*\*\* Les 20ul contiennent 0,1% de BSA.

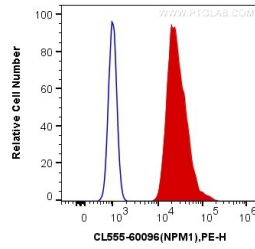
For technical support and original validation data for this product please contact:  
T: 1 (888) 4PTGLAB (1-888-478-4522) (toll free in USA), or 1(312) 455-8498 (outside USA)  
E: proteintech@ptglab.com  
W: ptglab.com

This product is exclusively available under Proteintech Group brand and is not available to purchase from any other manufacturer.

## Données de validation sélectionnées



Immunofluorescent analysis of (4% PFA) fixed HepG2 cells using CoraLite@555 B23/NPM1 antibody (CL555-60096, Clone: 4F12A3) at dilution of 1:1000. DAPI (blue).



$1 \times 10^6$  HeLa cells were intracellularly stained with 0.25  $\mu$ g CoraLite@555 Anti-Human B23/NPM1 (CL555-60096, Clone:4F12A3) (red), or 0.25  $\mu$ g Control Antibody. Cells were fixed and permeabilized with Transcription Factor Staining Buffer Kit (PF00011).