

À des fins de recherche uniquement

# Anticorps Monoclonal anti-Chromogranin A



Numéro de catalogue: CL555-60135

## Informations de base

Numéro de catalogue: CL555-60135	Numéro d'acquisition GenBank: BC006459	Méthode de purification: Purification par protéine G
Taille: 100ul , Concentration: 1000 µg/ml by Nanodrop;	Identification du gène (NCBI): 1113	CloneNo.: 3H11C11
Hôte: Mouse	Nom complet: chromogranin A (parathyroid secretory protein 1)	Dilutions recommandées: IF 1:50-1:500
Isotype: IgG1	MW calculé 51 kDa	Excitation/Emission maxima wavelengths: 557 nm / 570 nm
Immunogen Catalog Number: AG0807		

## Applications

Applications testées: FC (Intra), IF	Contrôles positifs: IF : cellules PC-12, cellules Neuro-2a, cellules SH-SY5Y
Spécificité de l'espèce: Humain, porc, rat, souris	

## Informations générales

Chromogranin A is a member of the granin family of neuroendocrine secretory proteins. It is located in secretory vesicles of neurons and endocrine cells. Chromogranin A is the precursor to several functional peptides including vasostatin, pancreastatin, catestatin and parastatin. These peptides negatively modulate the neuroendocrine function of the releasing cell (autocrine) or nearby cells (paracrine). CgA is one of the most used tumor markers in NET's (neuroendocrine tumors), and elevated CgA concentrations have been demonstrated in serum or plasma of patients with different types of these tumors.

## Stockage

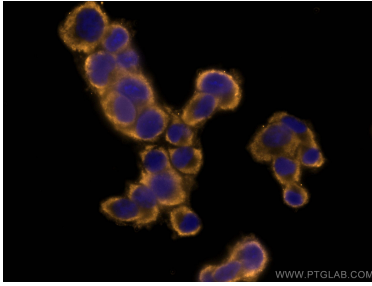
**Stockage:**  
Stocker à -20 °C. Éviter toute exposition à la lumière. Stable pendant un an après l'expédition.  
**Tampon de stockage:**  
PBS avec glycérol à 50 %, Proclin300 à 0,05 % et BSA à 0,5 %, pH 7,3.  
L'aliquotage n'est pas nécessaire pour le stockage à -20C

**\*\*\* Les 20ul contiennent 0,1% de BSA.**

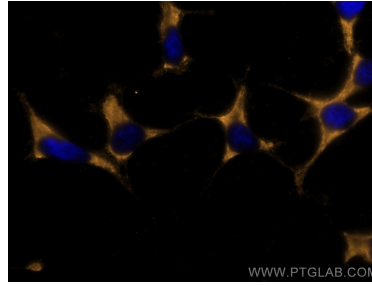
For technical support and original validation data for this product please contact:  
T: 1 (888) 4PTGLAB (1-888-478-4522) (toll free in USA), or 1(312) 455-8498 (outside USA)  
E: proteintech@ptglab.com  
W: ptglab.com

**This product is exclusively available under Proteintech Group brand and is not available to purchase from any other manufacturer.**

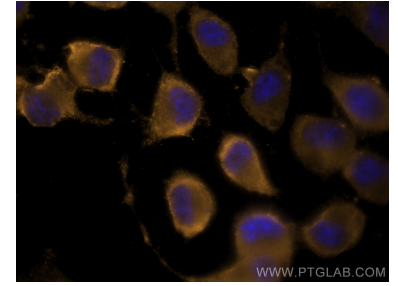
## Données de validation sélectionnées



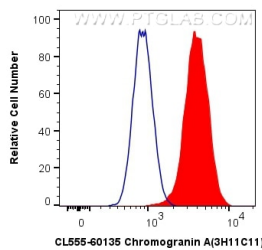
Immunofluorescent analysis of (-20°C Ethanol) fixed PC-12 cells using CoraLite@555 Chromogranin A antibody (CL555-60135, Clone: 3H11C11) at dilution of 1:200.



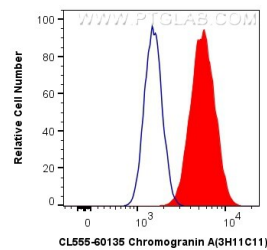
Immunofluorescent analysis of (-20°C Ethanol) fixed SH-SY5Y cells using CoraLite@555 Chromogranin A antibody (CL555-60135, Clone: 3H11C11) at dilution of 1:200.



Immunofluorescent analysis of (4% PFA) fixed Neuro-2a cells using CoraLite@555 Chromogranin A antibody (CL555-60135, Clone: 3H11C11) at dilution of 1:200.



$1 \times 10^6$  SH-SY5Y cells were intracellularly stained with 0.8 ug CoraLite@555 Anti-Human Chromogranin A (CL555-60135, Clone:3H11C11) (red), or 0.8 ug Control Antibody. Cells were fixed with 4% PFA and permeabilized with Flow Cytometry Perm Buffer (PF00011-C).



$1 \times 10^6$  Neuro-2a cells were intracellularly stained with 0.8 ug CoraLite@555 Anti-Human Chromogranin A (CL555-60135, Clone:3H11C11) (red), or 0.8 ug Control Antibody. Cells were fixed with 4% PFA and permeabilized with Flow Cytometry Perm Buffer (PF00011-C).