

À des fins de recherche uniquement

# Anticorps Monoclonal anti-BCL2

Numéro de catalogue: **CL555-60178** **Phare**



## Informations de base

Numéro de catalogue: CL555-60178	Numéro d'acquisition GenBank: BC027258	Méthode de purification: Purification par protéine A
Taille: 100ul , Concentration: 1000 µg/ml by Nanodrop;	Identification du gène (NCBI): 596	CloneNo.: 4H8C6
Hôte: Mouse	Nom complet: B-cell CLL/lymphoma 2	Dilutions recommandées: IF 1:50-1:500
Isotype: IgG2b	MW calculé 26 kDa	Excitation/Emission maxima wavelengths: 557 nm / 570 nm
Immunogen Catalog Number: AG3508	MW observés: 26 kDa	

## Applications

Applications testées: FC (Intra), IF	Contrôles positifs: IF : tissu d'appendicite humain, cellules MCF-7, cellules NIH/3T3
Spécificité de l'espèce: Humain, porc	

## Informations générales

BCL2 belongs to the Bcl-2 family. It suppresses apoptosis in a variety of cell systems including factor-dependent lymphohematopoietic and neural cells. BCL2 regulates cell death by controlling the mitochondrial membrane permeability. It appears to function in a feedback loop system with caspases. BCL2 inhibits caspase activity either by preventing the release of cytochrome c from the mitochondria and/or by binding to the apoptosis-activating factor (APAF-1).

## Stockage

**Stockage:**  
Stocker à -20 °C. Éviter toute exposition à la lumière. Stable pendant un an après l'expédition.  
**Tampon de stockage:**  
PBS avec glycérol à 50 %, Proclin300 à 0,05 % et BSA à 0,5 %, pH 7,3.  
L'aliquotage n'est pas nécessaire pour le stockage à -20C

**\*\*\* Les 20ul contiennent 0,1% de BSA.**

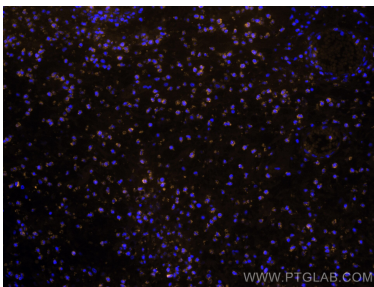
For technical support and original validation data for this product please contact:

T: 1 (888) 4PTGLAB (1-888-478-4522) (toll free  
in USA), or 1(312) 455-8498 (outside USA)

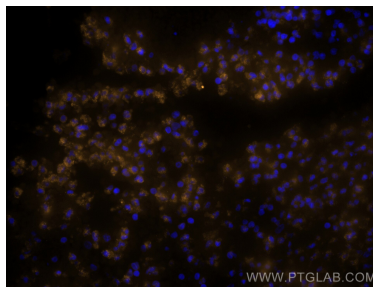
E: [proteintech@ptglab.com](mailto:proteintech@ptglab.com)  
W: [ptglab.com](http://ptglab.com)

**This product is exclusively available under Proteintech Group brand and is not available to purchase from any other manufacturer.**

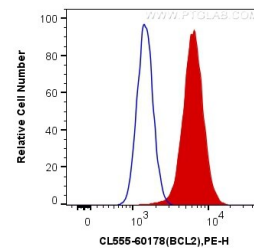
## Données de validation sélectionnées



Immunofluorescent analysis of (4% PFA) fixed human appendicitis tissue using CoraLite@555 BCL2 antibody (CL555-60178, Clone: 4H8C6) at dilution of 1:200.



Immunofluorescent analysis of (4% PFA) fixed human appendicitis tissue using CoraLite@555 BCL2 antibody (CL555-60178, Clone: 4H8C6) at dilution of 1:200.



$1 \times 10^6$  HeLa cells were intracellularly stained with 0.4 ug CoraLite@555 Anti-Human BCL2 (CL555-60178, Clone:4H8C6) (red), or 0.4 ug Control Antibody. Cells were fixed with 4% PFA and permeabilized with Flow Cytometry Perm Buffer (PF00011-C).