

À des fins de recherche uniquement

Anticorps Monoclonal anti-CD45

Numéro de catalogue: **CL555-60287**



Informations de base

Numéro de catalogue: CL555-60287	Numéro d'acquisition GenBank: BC014239	Méthode de purification: Purification par protéine A
Taille: 100ul , Concentration: 1000 µg/ml by Nanodrop;	Identification du gène (NCBI): 5788	CloneNo.: 4E9B2
Hôte: Mouse	Nom complet: protein tyrosine phosphatase, receptor type, C	Dilutions recommandées: IF 1:50-1:500
Isotype: IgG2a	MW calculé 1304 aa, 147 kDa	Excitation/Emission maxima wavelengths: 557 nm / 570nm
Immunogen Catalog Number: AG13712	MW observés: 220 kDa	

Applications

Applications testées: FC (Intra), IF	Contrôles positifs: IF : tissu splénique de souris,
Spécificité de l'espèce: Humain, porc, rat, souris	

Informations générales

CD45, also known as leukocyte common antigen (LCA), B220, and T200, is a 180-240 kD single chain type I membrane glycoprotein. It is a tyrosine phosphatase expressed on the plasma membrane of all hematopoietic cells, except erythrocytes and platelets. CD45 is a signaling molecule that regulates a variety of cellular processes including cell growth, differentiation, cell cycle, and oncogenic transformation. CD45 is one of the best negative selection markers for characterizing and/or isolating human mesenchymal stem cells from bone marrow and other sources. Along with the positive selection markers (such as CD29, CD44, CD90, CD105 and CD166), negative selection markers (such as CD34 and CD45) are used for MSC identification.

Stockage

Stockage:
Stocker à -20 °C. Éviter toute exposition à la lumière. Stable pendant un an après l'expédition.
Tampon de stockage:
PBS avec glycérol à 50 %, Proclin300 à 0,05 % et BSA à 0,5 %, pH 7,3.
L'aliquotage n'est pas nécessaire pour le stockage à -20C

***** Les 20ul contiennent 0,1% de BSA.**

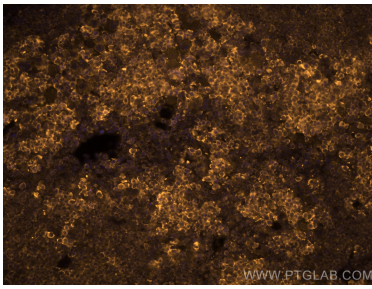
For technical support and original validation data for this product please contact:

T: 1 (888) 4PTGLAB (1-888-478-4522) (toll free
in USA), or 1(312) 455-8498 (outside USA)

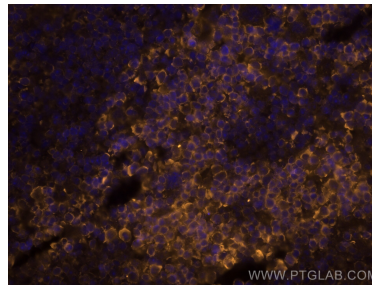
E: proteintech@ptglab.com
W: ptglab.com

This product is exclusively available under Proteintech Group brand and is not available to purchase from any other manufacturer.

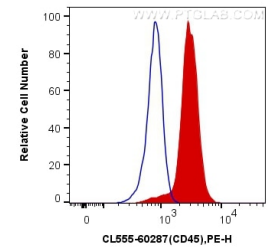
Données de validation sélectionnées



Immunofluorescent analysis of (4% PFA) fixed mouse spleen tissue using CoraLite®555 CD45 antibody (CL555-60287, Clone: 4E9B2) at dilution of 1:200.



Immunofluorescent analysis of (4% PFA) fixed mouse spleen tissue using CoraLite®555 CD45 antibody (CL555-60287, Clone: 4E9B2) at dilution of 1:200.



1X10⁶ Raji cells were intracellularly stained with 0.4 ug CoraLite®555 Anti-Human CD45 (CL555-60287, Clone:4E9B2) (red), or 0.4 ug isotype control. Cells were fixed with 4% PFA and permeabilized with Flow Cytometry Perm Buffer (PF00011-C).