

À des fins de recherche uniquement

Anticorps Monoclonal anti-CD107a / LAMP1



Numéro de catalogue: **CL555-65050**

Informations de base

Numéro de catalogue:

CL555-65050

Taille:

100 tests, 5 µl/test

Hôte:

Rat

Isotype:

IgG2a, kappa

Numéro d'acquisition GenBank:

BC006785

Identification du gène (NCBI):

16783

Nom complet:

lysosomal-associated membrane protein 1

Méthode de purification:

Purification par affinité

CloneNo.:

1D4B

Dilutions recommandées:

IF 1:50-1:500

Excitation/Emission maxima wavelengths:

557 nm / 570nm

Applications

Applications testées:

FC (Intra), IF

Spécificité de l'espèce:

souris

Contrôles positifs:

IF : cellules NIH/3T3,

Informations générales

LAMP1 (CD107a) is a heavily glycosylated membrane protein enriched in the lysosomal membrane. LAMP1 is extensively glycosylated with asparagine-linked oligosaccharides which protect it from intracellular proteolysis (PMID: 10521503). Although LAMP1 is expressed largely in the endosome-lysosomal membrane of cells, it is also found on the plasma membrane (PMID: 16168398). Elevated LAMP1 expression at the cell surface has also been detected during platelet and granulocytic cell activation, as well as in some tumor cells (PMID: 29085473). LAMP1 functions to provide selectins with carbohydrate ligands. This protein has also been shown to be a marker of degranulation on lymphocytes such as CD8+ and NK cells and may also play a role in tumor cell differentiation and metastasis (PMID: 18835598; 29085473; 9426697).

Stockage

Stockage:

Store at 2-8°C. Avoid exposure to light. Stable for one year after shipment.

Tampon de stockage:

PBS avec azoture de sodium à 0,1 % et BSA à 0,5 %, pH 7,3.

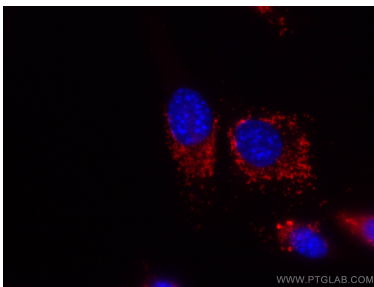
For technical support and original validation data for this product please contact:

T: 1 (888) 4PTGLAB (1-888-478-4522) (toll free in USA), or 1(312) 455-8498 (outside USA)

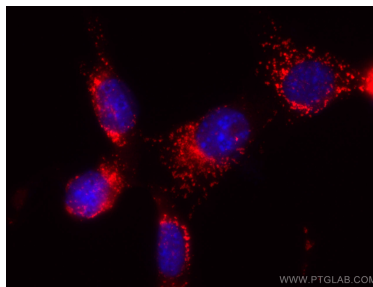
E: proteintech@ptglab.com
W: ptglab.com

This product is exclusively available under Proteintech Group brand and is not available to purchase from any other manufacturer.

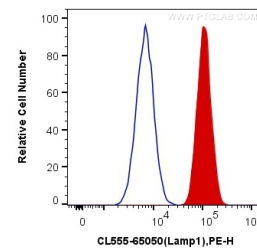
Données de validation sélectionnées



Immunofluorescent analysis of (-20°C Ethanol) fixed NIH/3T3 cells using CoraLite@555 CD107a antibody (CL555-65050, Clone: 1D4B) at dilution of 1:100.



Immunofluorescent analysis of (-20°C Ethanol) fixed NIH/3T3 cells using CoraLite@555 CD107a antibody (CL555-65050, Clone: 1D4B) at dilution of 1:100.



1X10⁶ NIH/3T3 cells were intracellularly stained with 5 ul CoraLite@555 Anti-Mouse CD107a (CL555-65050, Clone:1D4B) (red), or Control Antibody. Cells were fixed with 4% PFA and permeabilized with Flow Cytometry Perm Buffer (PF00011-C).