

À des fins de recherche uniquement

Anticorps Monoclonal anti-CD20

Numéro de catalogue: CL555-65085



Informations de base

Numéro de catalogue:

CL555-65085

Taille:

100tests , 5 µl/test

Hôte:

Mouse

Isotype:

IgG2b, kappa

Numéro d'acquisition GenBank:

BC002807

Identification du gène (NCBI):

931

Nom complet:

membrane-spanning 4-domains,
subfamily A, member 1

MW calculé

297 aa, 33 kDa

Méthode de purification:

Purification par affinité

CloneNo.:

2H7

Excitation/Emission maxima
wavelengths:

554 nm / 570 nm

Applications

Applications testées:

FC

Spécificité de l'espèce:

Humain

Informations générales

CD20 is a 33-37 kDa transmembrane phosphoprotein belonging to the membrane-spanning 4A family (PMID: 3260267; 16785532). CD20 is a B-lymphocyte surface molecule that is widely expressed during B-cell ontogeny, from early pre-B-cell developmental stages until final differentiation into plasma cells (PMID: 7524522). CD20 functions as calcium-permeable cation channel (PMID: 7684739). It is involved in the regulation of B-cell activation, proliferation and differentiation (PMID: 7524522).

Stockage

Stockage:

Store at 2-8°C. Avoid exposure to light. Stable for one year after shipment.

Tampon de stockage:

PBS with 0.09% sodium azide and 0.5% BSA.

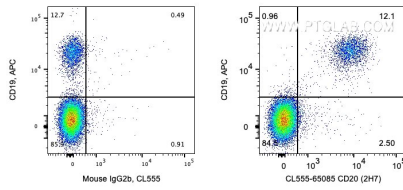
For technical support and original validation data for this product please contact:

T: 1 (888) 4PTGLAB (1-888-478-4522) (toll free
in USA), or 1(312) 455-8498 (outside USA)

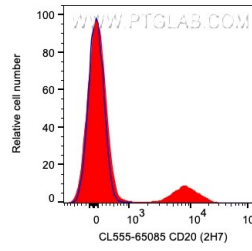
E: proteintech@ptglab.com
W: ptglab.com

This product is exclusively available under Proteintech Group brand and is not available to purchase from any other manufacturer.

Données de validation sélectionnées



1X10⁶ human PBMCs were surface co-stained with APC Anti-Human CD19 and 5 ul CoraLite® Plus 555 Anti-Human CD20 (CL555-65085, Clone:2H7) or Mouse IgG2b Isotype Control (66360-3-Ig, Clone: K11B8C4B5). Cells were not fixed. Lymphocytes were gated.



1X10⁶ human PBMCs were surface stained with 5 ul CoraLite® Plus 555 Anti-Human CD20 (CL555-65085, Clone:2H7) or Mouse IgG2b Isotype Control (66360-3-Ig, Clone: K11B8C4B5). Cells were not fixed. Lymphocytes were gated.