

À des fins de recherche uniquement

# Anticorps Monoclonal anti-CD29

Numéro de catalogue: **CL555-65191**



## Informations de base

Numéro de catalogue:  
CL555-65191

Taille:  
100 tests, 5 µl/test

Hôte:  
Mouse

Isotype:  
IgG1, kappa

Numéro d'acquisition GenBank:  
BC020057

Identification du gène (NCBI):  
3688

Nom complet:  
integrin, beta 1 (fibronectin receptor,  
beta polypeptide, antigen CD29  
includes MDF2, MSK12)

MW calculé  
88 kDa

Méthode de purification:  
Purification par protéine G

CloneNo.:  
TS2/16

Excitation/Emission maxima  
wavelengths:  
554 nm / 570 nm

## Applications

Applications testées:  
FC

Spécificité de l'espèce:  
Humain

## Informations générales

Integrin beta-1 (ITGB1), also named as CD29, is a 130 kDa single chain type I glycoprotein that is expressed in a heterodimeric complex with one of six distinct  $\alpha$  subunits, comprising the very late activation antigen (VLA) subfamily of adhesion receptors. It is one of the essential surface molecules expressed on human MSC from bone marrow and other sources. The  $\beta$ 1 subunit is also broadly expressed on lymphocytes and monocytes, weakly expressed on granulocytes, and not expressed on erythrocytes. These receptors are involved in a variety of cell-cell and cell-matrix interactions.

## Stockage

Stockage:  
Store at 2-8°C. Avoid exposure to light. Stable for one year after shipment.  
Tampon de stockage:  
PBS with 0.09% sodium azide and 0.5% BSA.

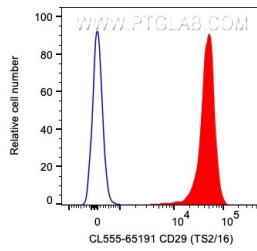
For technical support and original validation data for this product please contact:

T: 1 (888) 4PTGLAB (1-888-478-4522) (toll free  
in USA), or 1(312) 455-8498 (outside USA)

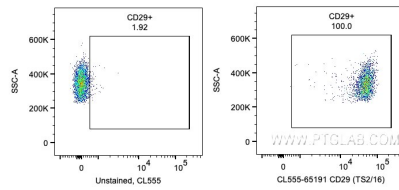
E: [proteintech@ptglab.com](mailto:proteintech@ptglab.com)  
W: [ptglab.com](http://ptglab.com)

**This product is exclusively available under Proteintech Group brand and is not available to purchase from any other manufacturer.**

## Données de validation sélectionnées



1X10<sup>6</sup> human PBMCs were surface stained with 5 ul CoraLite® Plus 555 Anti-Human CD29 (CL555-65191, Clone:TS2/16) (red) or unstained. Cells were not fixed. Monocytes were gated.



1X10<sup>6</sup> human PBMCs were surface stained with 5 ul CoraLite® Plus 555 Anti-Human CD29 (CL555-65191, Clone:TS2/16) or unstained. Cells were not fixed. Monocytes were gated.