

À des fins de recherche uniquement

Anticorps Monoclonal anti-ALCAM

Numéro de catalogue: **CL555-65223**



Informations de base

Numéro de catalogue: CL555-65223	Numéro d'acquisition GenBank: BC057809	Méthode de purification: Purification par affinité
Taille: 100tests , 5 µl/test	Identification du gène (NCBI): 214	CloneNo.: 3A6
Hôte: Mouse	Nom complet: activated leukocyte cell adhesion molecule	Excitation/Emission maxima wavelengths: 554 nm / 570 nm
Isotype: IgG1, kappa	MW calculé 105 kDa	

Applications

Applications testées:
FC

Spécificité de l'espèce:
Humain

Informations générales

Activated leukocyte cell adhesion molecule (ALCAM, also known as CD166) is a cell adhesion molecule that belongs to the immunoglobulin superfamily. It is involved in cell-cell adhesion through homophilic and heterophilic (to CD6) interactions. ALCAM is widely expressed in a variety of normal tissues and cell types, including activated T cells and monocytes, epithelial cells, fibroblasts, neuronal cells, hepatocytes, and bone marrow mesenchymal stem cells (PMID: 7760007; 25221999). Altered ALCAM expression has been associated with the differentiation state and progression in some neoplasms including melanoma, prostate, colorectal, and breast cancers (PMID: 20461761; 18172759).

Stockage

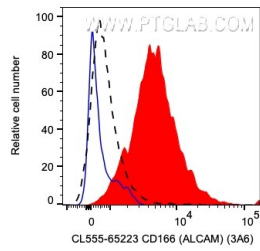
Stockage:
Store at 2-8°C. Avoid exposure to light. Stable for one year after shipment.

Tampon de stockage:
PBS with 0.09% sodium azide and 0.5% BSA.

For technical support and original validation data for this product please contact:
T: 1 (888) 4PTGLAB (1-888-478-4522) (toll free in USA), or 1(312) 455-8498 (outside USA) E: proteintech@ptglab.com
W: ptglab.com

This product is exclusively available under Proteintech Group brand and is not available to purchase from any other manufacturer.

Données de validation sélectionnées



1X10⁶ PHA-treated (day 3) human PBMCs were surface stained with 5 μ l CoraLite® Plus 555 Anti-Human ALCAM (CL555-65223, Clone:3A6) (red), or unstained (blue). The black dashed line indicates unactivated PBMCs surface stained with 5 μ l CoraLite® Plus 555 Anti-Human ALCAM (CL555-65223, Clone:3A6). Cells were not fixed. Monocytes were gated.