

À des fins de recherche uniquement

Anticorps Monoclonal anti-CD85j / LILRB1



Numéro de catalogue: **CL555-65238**

Informations de base

Numéro de catalogue:

CL555-65238

Taille:

100tests, 5 ul/test

Hôte:

Mouse

Isotype:

IgG2b, kappa

Numéro d'acquisition GenBank:

BC015731

Identification du gène (NCBI):

10859

Nom complet:

leukocyte immunoglobulin-like
receptor, subfamily B (with TM and
ITIM domains), member 1

MW calculé

71 kDa

Méthode de purification:

N/A

CloneNo.:

GHI/75

Excitation/Emission maxima
wavelengths:

554 nm / 570 nm

Applications

Applications testées:

FC

Spécificité de l'espèce:

Humain

Informations générales

Stockage

Stockage:

Store at 2-8°C. Avoid exposure to light. Stable for one year after shipment.

Tampon de stockage:

PBS with 0.09% sodium azide and 0.5% BSA.

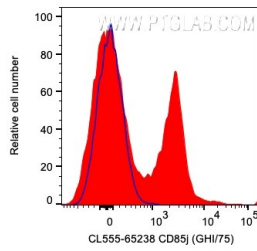
For technical support and original validation data for this product please contact:

T: 1 (888) 4PTGLAB (1-888-478-4522) (toll free
in USA), or 1(312) 455-8498 (outside USA)

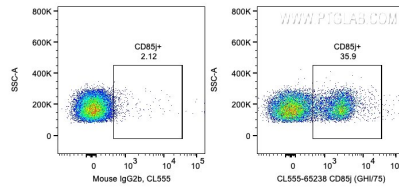
E: proteintech@ptglab.com
W: ptglab.com

This product is exclusively available under Proteintech Group brand and is not available to purchase from any other manufacturer.

Données de validation sélectionnées



1X10⁶ human PBMCs were surface stained with 5 ul CoraLite® Plus 555 Anti-Human CD85j / LILRB1 (CL555-65238, Clone:GHI/75) or Mouse IgG2b Isotype Control (66360-3-Ig, Clone: K11B8C4B5). Cells were not fixed. Lymphocytes were gated.



1X10⁶ human PBMCs were surface stained with 5 ul CoraLite® Plus 555 Anti-Human CD85j / LILRB1 (CL555-65238, Clone:GHI/75) or Mouse IgG2b Isotype Control. Cells were not fixed. Lymphocytes were gated.