

À des fins de recherche uniquement

# Anticorps Monoclonal anti-CD35

Numéro de catalogue: **CL555-65254**



## Informations de base

Numéro de catalogue:  
CL555-65254

Taille:  
100tests , 5 µl/test

Hôte:  
Mouse

Isotype:  
IgG1, kappa

Numéro d'acquisition GenBank:  
NM\_000573

Identification du gène (NCBI):  
1378

Nom complet:  
complement component (3b/4b)  
receptor 1 (Knops blood group)

MW calculé  
224 kDa

Méthode de purification:  
Purification par affinité

CloneNo.:  
E11

Excitation/Emission maxima  
wavelengths:  
554 nm / 570 nm

## Applications

Applications testées:  
FC

Spécificité de l'espèce:  
Humain

## Informations générales

### Stockage

Stockage:  
Store at 2-8°C. Avoid exposure to light. Stable for one year after shipment.  
Tampon de stockage:  
PBS with 0.09% sodium azide and 0.5% BSA.

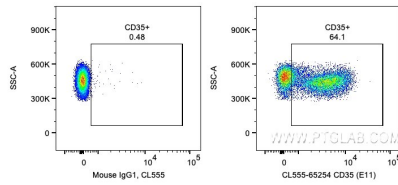
For technical support and original validation data for this product please contact:

T: 1 (888) 4PTGLAB (1-888-478-4522) (toll free  
in USA), or 1(312) 455-8498 (outside USA)

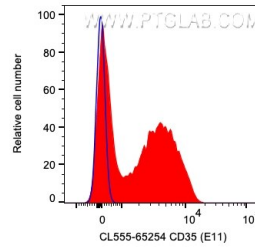
E: [proteintech@ptglab.com](mailto:proteintech@ptglab.com)  
W: [ptglab.com](http://ptglab.com)

**This product is exclusively available under Proteintech Group brand and is not available to purchase from any other manufacturer.**

## Données de validation sélectionnées



1X10<sup>6</sup> human PBMCs were surface stained with 5 ul CoraLite® Plus 555 Anti-Human CD35 (CL555-65254, Clone:E11) or Mouse IgG1 Isotype Control. Cells were not fixed. Lymphocytes were gated.



1X10<sup>6</sup> human PBMCs were surface stained with 5 ul CoraLite® Plus 555 Anti-Human CD35 (CL555-65254, Clone:E11) (red) or Mouse IgG1 Isotype Control (blue). Cells were not fixed. Lymphocytes were gated.