

À des fins de recherche uniquement

# Anticorps Monoclonal anti-CD31

Numéro de catalogue: CL555-65268



## Informations de base

Numéro de catalogue:  
CL555-65268

Taille:  
100 tests, 5 µl/test

Hôte:  
Mouse

Isotype:  
IgG1, kappa

Numéro d'acquisition GenBank:  
BC022512

Identification du gène (NCBI):  
5175

Nom complet:  
platelet/endothelial cell adhesion  
molecule

MW calculé  
83 kDa

Méthode de purification:  
Purification par affinité

CloneNo.:  
WM-59

Excitation/Emission maxima  
wavelengths:  
554 nm / 570 nm

## Applications

Applications testées:  
FC

Spécificité de l'espèce:  
Humain

## Informations générales

CD31, also known as PECAM1 (Platelet endothelial cell adhesion molecule), is a member of the immunoglobulin gene superfamily of cell adhesion molecules. CD31 is a transmembrane glycoprotein that is highly expressed on the surface of the endothelium, making up a large portion of its intracellular junctions. It is also present on the surface of hematopoietic cells and immune cells including platelets, monocytes, neutrophils, natural killer cells, megakaryocytes and some types of T-cell (PMID: 9011572). As well as its role in cell-cell adhesion, CD31 functions as a signaling receptor, and is involved in important physiological events such as nitric oxide production, regulation of T-cell immunity and tolerance, leukocyte transendothelial migration and inflammation and angiogenesis (PMID: 21183735; 20978210; 17872453; 20634489).

## Stockage

Stockage:

Store at 2-8°C. Avoid exposure to light. Stable for one year after shipment.

Tampon de stockage:

PBS with 0.09% sodium azide and 0.5% BSA.

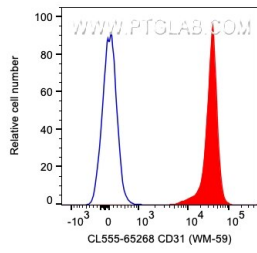
For technical support and original validation data for this product please contact:

T: 1 (888) 4PTGLAB (1-888-478-4522) (toll free  
in USA), or 1(312) 455-8498 (outside USA)

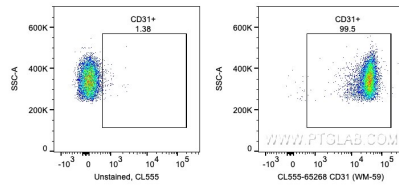
E: [proteintech@ptglab.com](mailto:proteintech@ptglab.com)  
W: [ptglab.com](http://ptglab.com)

This product is exclusively available under Proteintech Group brand and is not available to purchase from any other manufacturer.

## Données de validation sélectionnées



1X10<sup>6</sup> human PBMCs were surface stained with 5 ul CoraLite® Plus 555 Anti-Human CD31 (CL555-65268, Clone:WM-59) (red) or unstained. Cells were not fixed. Monocytes were gated.



1X10<sup>6</sup> human PBMCs were surface stained with 5 ul CoraLite® Plus 555 Anti-Human CD31 (CL555-65268, Clone:WM-59) or unstained. Cells were not fixed. Monocytes were gated.