

À des fins de recherche uniquement

Anticorps Monoclonal anti-Beta Actin



Numéro de catalogue: CL555-66009

Phare

Informations de base

Numéro de catalogue: CL555-66009	Numéro d'acquisition GenBank: NM_001101	Méthode de purification: Purification par protéine A
Taille: 100ul , Concentration: 1000 µg/ml by 60 Nanodrop;	Identification du gène (NCBI): 60	CloneNo.: 2D4H5
Hôte: Mouse	Nom complet: actin, beta	Dilutions recommandées: IF 1:50-1:500
Isotype: IgG2b	MW calculé: 42 kDa	Excitation/Emission maxima wavelengths: 557 nm / 570nm
	MW observés: 42 kDa	

Applications

Applications testées: FC (Intra), IF	Contrôles positifs: IF : cellules A549,
Spécificité de l'espèce: chien, Humain, poisson-zèbre, rat, singe, souris, Hamster	

Informations générales

Actins are highly conserved globular proteins that are involved in various types of cell motility and are ubiquitously expressed in all eukaryotic cells. At least six isoforms of actins are known in mammals and other vertebrates: alpha (ACTC1, cardiac muscle 1), alpha 1 (ACTA1, skeletal muscle) and 2 (ACTA2, aortic smooth muscle), beta (ACTB), gamma 1 (ACTG1) and 2 (ACTG2, enteric smooth muscle). Beta and gamma 1 are two non-muscle actin proteins. Most actins consist of 376aa, while ACTG2 (rich in muscles) has 375aa and ACTG1(found in non-muscle cells) has only 374aa. Beta actin has been widely used as the internal control in RT-PCR and Western Blotting as a 42-kDa protein. However, the 41 kDa cleaved fragment of beta actin can be generated during apoptosis process. This antibody can recognize all the actins. The isotype of this antibody is IgG2b. For murine tissue sample, conjugated antibody (HRP-66009) or rabbit antibody (20536-1-AP) is preferable.

Stockage

Stockage:
Stocker à -20 °C. Éviter toute exposition à la lumière.
Tampon de stockage:
PBS avec glycérol à 50 %, Proclin300 à 0,05 % et BSA à 0,5 %, pH 7,3.
L'aliquotage n'est pas nécessaire pour le stockage à -20C

*** Les 20ul contiennent 0,1% de BSA.

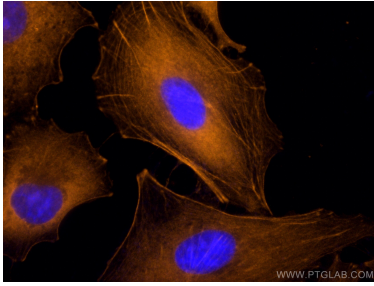
For technical support and original validation data for this product please contact:

T: 1 (888) 4PTGLAB (1-888-478-4522) (toll free
in USA), or 1(312) 455-8498 (outside USA)

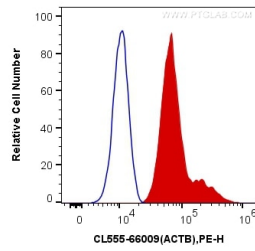
E: proteintech@ptglab.com
W: ptglab.com

This product is exclusively available under Proteintech Group brand and is not available to purchase from any other manufacturer.

Données de validation sélectionnées



Immunofluorescent analysis of (-20°C Methanol) fixed A549 cells using Coralite@555 Beta Actin antibody (CL555-66009, Clone: 2D4H5) at dilution of 1:100.



1X10⁶ HeLa cells were intracellularly stained with 0.4 ug Coralite@555 Anti-Human Beta Actin (CL555-66009, Clone:2D4H5) (red), or 0.4 ug Control Antibody. Cells were fixed with 4% PFA and permeabilized with Flow Cytometry Perm Buffer (PF00011-C).