

À des fins de recherche uniquement

# Anticorps Monoclonal anti-Alpha Tubulin



Numéro de catalogue: **CL555-66031**

## Informations de base

Numéro de catalogue: CL555-66031	Numéro d'acquisition GenBank: BC009314	Méthode de purification: Purification par protéine A
Taille: 100ul , Concentration: 1000 µg/ml by Nanodrop;	Identification du gène (NCBI): 10376	CloneNo.: 1E4C11
Hôte: Mouse	Nom complet: tubulin, alpha 1b	Dilutions recommandées: IF 1:400-1:1600
Isotype: IgG2b	MW calculé 50 kDa	Excitation/Emission maxima wavelengths: 557 nm / 570nm
Immunogen Catalog Number: AG18034	MW observés: 50-55 kDa	

## Applications

Applications testées: FC (Intra), IF	Contrôles positifs: IF : cellules HeLa,
Spécificité de l'espèce: canin, Humain, rat, souris	

## Informations générales

There are five tubulins in human cells: alpha, beta, gamma, delta, and epsilon. Tubulins are conserved across species. They form heterodimers, which multimerize to form a microtubule filament. An alpha and beta tubulin heterodimer is the basic structural unit of microtubules. The heterodimer does not come apart once formed. The alpha and beta tubulins, which are each about 55 kDa MW, are homologous but not identical. Alpha tubulin is useful for scientists across fields as an internal control due to its high, ubiquitous expression pattern. Tubulin expression may vary according to resistance to antimicrobial and antimitotic drugs. This antibody specifically recognizes Tubulin Alpha.

## Stockage

**Stockage:**  
Stocker à -20 °C. Éviter toute exposition à la lumière.  
**Tampon de stockage:**  
PBS avec glycérol à 50 %, Proclin300 à 0,05 % et BSA à 0,5 %, pH 7,3.  
L'aliquotage n'est pas nécessaire pour le stockage à -20C

**\*\*\* Les 20ul contiennent 0,1% de BSA.**

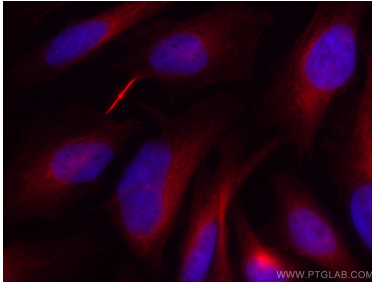
For technical support and original validation data for this product please contact:

T: 1 (888) 4PTGLAB (1-888-478-4522) (toll free  
in USA), or 1(312) 455-8498 (outside USA)

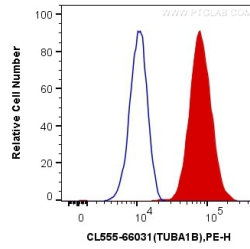
E: [proteintech@ptglab.com](mailto:proteintech@ptglab.com)  
W: [ptglab.com](http://ptglab.com)

**This product is exclusively available under Proteintech Group brand and is not available to purchase from any other manufacturer.**

## Données de validation sélectionnées



Immunofluorescent analysis of (4% PFA) fixed HeLa cells using CoraLite@555 Alpha Tubulin antibody (CL555-66031, Clone: 1E4C11) at dilution of 1:800.



1X10<sup>6</sup> HeLa cells were intracellularly stained with 0.4 ug CoraLite@555 Anti-Human Alpha Tubulin (CL555-66031, Clone:1E4C11) (red), or 0.4 ug Control Antibody. Cells were fixed with 4% PFA and permeabilized with Flow Cytometry Perm Buffer (PF00011-C).