

À des fins de recherche uniquement

# Anticorps Monoclonal anti-Lamin B1

Numéro de catalogue: **CL555-66095** **Phare**



## Informations de base

Numéro de catalogue: CL555-66095	Numéro d'acquisition GenBank: BC012295	Méthode de purification: Purification par protéine G
Taille: 100ul , Concentration: 1000 µg/ml by Nanodrop;	Identification du gène (NCBI): 4001	CloneNo.: 3C10G12
Hôte: Mouse	Nom complet: lamin B1	Dilutions recommandées: IF 1:400-1:1600
Isotype: IgG1	MW calculé 66 kDa	Excitation/Emission maxima wavelengths: 557 nm / 570nm
Immunogen Catalog Number: AG20522	MW observés: 66-70 kDa	

## Applications

Applications testées: FC (Intra), IF	Contrôles positifs: IF : cellules MCF-7, cellules U2OS
Spécificité de l'espèce: Humain, rat, souris	

## Informations générales

Lamins are components of the nuclear lamina, a fibrous layer on the nucleoplasmic side of the inner nuclear membrane, which is thought to provide a framework for the nuclear envelope and may also interact with chromatin. The nuclear lamina consists of a two-dimensional matrix of proteins located next to the inner nuclear membrane. The lamin family of proteins make up the matrix and are highly conserved in evolution. During mitosis, the lamina matrix is reversibly disassembled as the lamin proteins are phosphorylated. Vertebrate lamins consist of two types, A and B. This gene encodes one of the two B type proteins, B1. This protein is not suitable for samples where the nuclear envelope has been removed.

## Stockage

**Stockage:**  
Stocker à -20 °C. Éviter toute exposition à la lumière. Stable pendant un an après l'expédition.  
**Tampon de stockage:**  
PBS avec glycérol à 50 %, Proclin300 à 0,05 % et BSA à 0,5 %, pH 7,3.  
L'aliquotage n'est pas nécessaire pour le stockage à -20C

**\*\*\* Les 20ul contiennent 0,1% de BSA.**

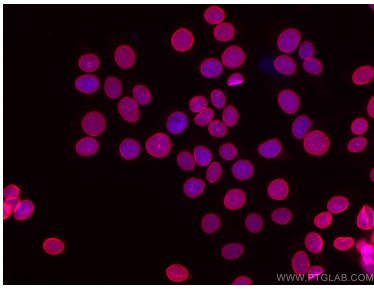
For technical support and original validation data for this product please contact:

T: 1 (888) 4PTGLAB (1-888-478-4522) (toll free  
in USA), or 1(312) 455-8498 (outside USA)

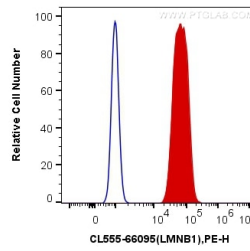
E: [proteintech@ptglab.com](mailto:proteintech@ptglab.com)  
W: [ptglab.com](http://ptglab.com)

**This product is exclusively available under Proteintech Group brand and is not available to purchase from any other manufacturer.**

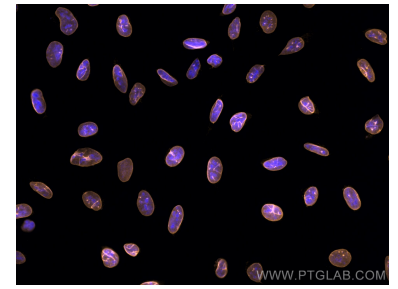
## Données de validation sélectionnées



Immunofluorescent analysis of (4% PFA) fixed MCF-7 cells using CoraLite@555 Lamin B1 antibody (CL555-66095, Clone: 3C10G12) at dilution of 1:800.



1X10<sup>6</sup> HeLa cells were intracellularly stained with 0.25 ug CoraLite@555 Anti-Human Lamin B1 (CL555-66095, Clone:3C10G12) (red), or 0.25 ug Control Antibody. Cells were fixed and permeabilized with Transcription Factor Staining Buffer Kit (PF00011).



Immunofluorescent analysis of (-20°C Methanol) fixed U2OS cells using CoraLite@555 Lamin B1 antibody (CL555-66095, Clone: 3C10G12) at dilution of 1:1000.