

À des fins de recherche uniquement

Anticorps Monoclonal anti- CD146/MCAM



Numéro de catalogue: **CL555-66153**

Informations de base

Numéro de catalogue: CL555-66153	Numéro d'acquisition GenBank: BC056418	Méthode de purification: Purification par protéine G
Taille: 100ul , Concentration: 1000 µg/ml by Nanodrop;	Identification du gène (NCBI): 4162	CloneNo.: 4D8A9
Hôte: Mouse	Nom complet: melanoma cell adhesion molecule	Dilutions recommandées: IF 1:50-1:500
Isotype: IgG1	MW calculé 646 aa, 72 kDa	Excitation/Emission maxima wavelengths: 557 nm / 570nm
Immunogen Catalog Number: AG11855	MW observés: 120 kDa	

Applications

Applications testées: IF	Contrôles positifs: IF : tissu de cancer du foie humain,
Spécificité de l'espèce: Humain	

Informations générales

CD146, also known as melanoma cell adhesion molecule (MCAM) or MUC18, originally identified as a biomarker of melanoma progression, is a transmembrane glycoprotein of 113-130 kDa, belonging to the immunoglobulin (Ig) superfamily (PMID: 8378324; 25993332). Structurally, it consists of five Ig domains, a transmembrane domain, and a cytoplasmic region. In normal adult tissue, CD146 is primarily expressed by vascular endothelium and smooth muscle. CD146 is a key cell adhesion protein in vascular endothelial cell activity and angiogenesis, and has been used as marker of circulating endothelium cells (CECs) (PMID: 19356677). In addition to the membrane-anchored form of CD146, a soluble form of CD146 (sCD146, 105 kDa) has also been found in human plasma and in the supernatant of cultured human endothelial cells (PMID: 9462829; 19229070; 16374253; 14597988). This antibody detects a band at approximately 120 kDa that corresponds to the molecular weight of glycosylated CD146. Treatment of lysates of HepG2 cells and LO2 cells with PNGase F, which removes oligosaccharides from N-linked glycoproteins, led to a down-shift of the detected band.

Stockage

Stockage:
Stocker à -20 °C. Éviter toute exposition à la lumière.
Tampon de stockage:
PBS avec glycérol à 50 %, Proclin300 à 0,05 % et BSA à 0,5 %, pH 7,3.
L'aliquotage n'est pas nécessaire pour le stockage à -20C

***** Les 20ul contiennent 0,1% de BSA.**

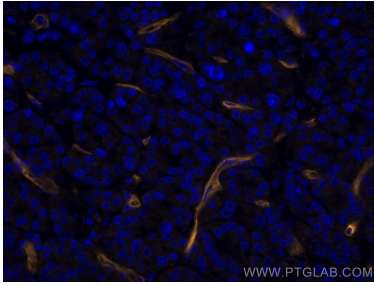
For technical support and original validation data for this product please contact:

T: 1 (888) 4PTGLAB (1-888-478-4522) (toll free
in USA), or 1(312) 455-8498 (outside USA)

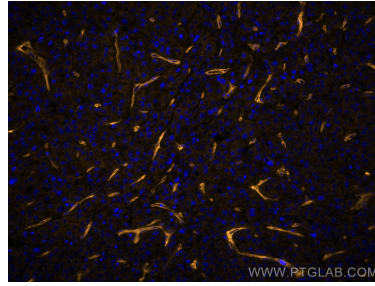
E: proteintech@ptglab.com
W: ptglab.com

This product is exclusively available under Proteintech Group brand and is not available to purchase from any other manufacturer.

Données de validation sélectionnées



Immunofluorescent analysis of (4% PFA) fixed human liver cancer tissue using CoraLite®555 CD146/MCAM antibody (CL555-66153, Clone: 4D8A9) at dilution of 1:200.



Immunofluorescent analysis of (4% PFA) fixed human liver cancer tissue using CoraLite®555 CD146/MCAM antibody (CL555-66153, Clone: 4D8A9) at dilution of 1:200.