

À des fins de recherche uniquement

Anticorps Monoclonal anti-acetylated Tubulin(Lys40)



Numéro de catalogue:CL555-66200

Informations de base

Numéro de catalogue: CL555-66200	Numéro d'acquisition GenBank: NM_006009	Méthode de purification: Purification par protéine G
Taille: 100ul , Concentration: 1000 µg/ml by Nanodrop;	Identification du gène (NCBI): 7846	CloneNo.: 7E5H8
Hôte: Mouse	Nom complet: tubulin, alpha 1a	Dilutions recommandées: IF 1:50-1:500
Isotype: IgG1	MW calculé 52 kDa	Excitation/Emission maxima wavelengths: 557 nm / 570nm
	MW observés: 50-55 kDa	

Applications

Applications testées: IF	Contrôles positifs: IF : cellules MDCK,
Spécificité de l'espèce: canin, Humain, porc, rat, souris	

Informations générales

Tubulin, composed of heterodimers of alpha and beta tubulin, is the mainly component of microtubules which play important roles in cell motility, mitosis, and intracellular vesicle transport. Both alpha and beta tubulin undergo several posttranslational modifications such as polyglutamylolation and acetylation/deacetylation. Tubulin acetylation occurs on lysine-40 at the N-terminal of alpha tubulin and is conserved across species. The histone deacetylase HDAC6 and SIRT2 has been identified as tubulin deacetylases. Reversible acetylation of alpha tubulin may be implicated in regulating microtubule stability, cell motility, and axon regeneration. The level of acetylated tubulin has been linked to epithelial malignancies and sensitivity to chemotherapy. In addition, acetylated tubulin has been widely used as a marker for primary cilia. This antibody is specific to the acetylated tubulin; it does not recognize non-acetylated tubulin. (24268707, 23881549)

Stockage

Stockage:
Stocker à -20 °C. Éviter toute exposition à la lumière.
Tampon de stockage:
PBS avec glycérol à 50 %, Proclin300 à 0,05 % et BSA à 0,5 %, pH 7,3.
L'aliquotage n'est pas nécessaire pour le stockage à -20C

***** Les 20ul contiennent 0,1% de BSA.**

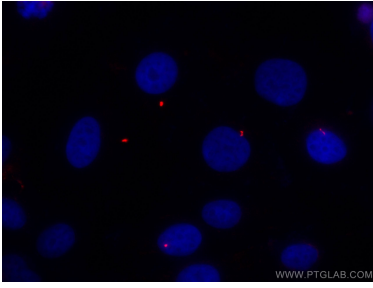
For technical support and original validation data for this product please contact:

T: 1 (888) 4PTGLAB (1-888-478-4522) (toll free
in USA), or 1(312) 455-8498 (outside USA)

E: proteintech@ptglab.com
W: ptglab.com

This product is exclusively available under Proteintech Group brand and is not available to purchase from any other manufacturer.

Données de validation sélectionnées



Immunofluorescent analysis of (4% PFA) fixed MDCK cells using CoraLite®555 acetylated Tubulin(Lys40) antibody (CL555-66200, Clone: 7E5H8) at dilution of 1:200.