

À des fins de recherche uniquement

Anticorps Monoclonal anti-Bcl2

Numéro de catalogue: CL555-66799



Informations de base

Numéro de catalogue: CL555-66799	Numéro d'acquisition GenBank: NM-009741	Méthode de purification: Purification par protéine G
Taille: 100ul , Concentration: 1000 µg/ml by Nanodrop;	Identification du gène (NCBI): 12043	CloneNo.: 1B5B9
Hôte: Mouse	Nom complet: B-cell leukemia/lymphoma 2	Dilutions recommandées: IF 1:50-1:500
Isotype: IgG1	MW calculé 26 kDa	Excitation/Emission maxima wavelengths: 557 nm / 570nm
Immunogen Catalog Number: AG24261	MW observés: 26 kDa	

Applications

Applications testées: FC (Intra), IF	Contrôles positifs: IF : cellules NIH/3T3,
Spécificité de l'espèce: souris	

Informations générales

Bcl2 is a member of the B cell lymphoma 2 protein family. Members of this family regulate cell death in multiple cell types and can have either proapoptotic or antiapoptotic activities. The protein encoded by this gene inhibits mitochondrial-mediated apoptosis. This protein is an integral outer mitochondrial membrane protein that functions as part of signaling pathway that controls mitochondrial permeability in response to apoptotic stimuli. This protein may also play a role in neuron cell survival and autophagy. Abnormal expression and chromosomal translocations of this gene are associated with cancer progression in numerous tissues.

Stockage

Stockage:
Stocker à -20 °C. Éviter toute exposition à la lumière.
Tampon de stockage:
PBS avec glycérol à 50 %, Proclin300 à 0,05 % et BSA à 0,5 %, pH 7,3.
L'aliquotage n'est pas nécessaire pour le stockage à -20C

***** Les 20ul contiennent 0,1% de BSA.**

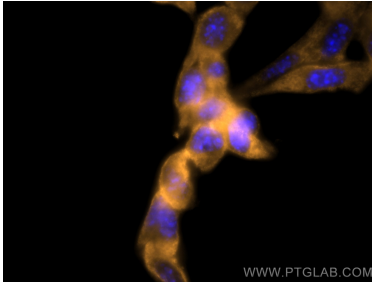
For technical support and original validation data for this product please contact:

T: 1 (888) 4PTGLAB (1-888-478-4522) (toll free
in USA), or 1(312) 455-8498 (outside USA)

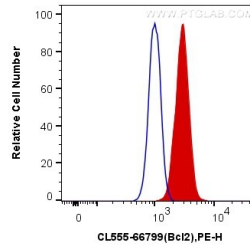
E: proteintech@ptglab.com
W: ptglab.com

This product is exclusively available under Proteintech Group brand and is not available to purchase from any other manufacturer.

Données de validation sélectionnées



Immunofluorescent analysis of (-20°C Methanol) fixed NIH/3T3 cells using Coralite@555 Bcl2 antibody (CL555-66799, Clone: 1B5B9) at dilution of 1:200.



1X10⁶ NIH/3T3 cells were intracellularly stained with 0.4 ug Coralite@555 Anti-Mouse Bcl2 (CL555-66799, Clone:1B5B9) (red), or 0.4 ug Control Antibody. Cells were fixed with 4% PFA and permeabilized with Flow Cytometry Perm Buffer (PF00011-C).