

À des fins de recherche uniquement

Anticorps Monoclonal anti-LARP1

Numéro de catalogue: CL555-67810



Informations de base

Numéro de catalogue: CL555-67810	Numéro d'acquisition GenBank: BC033856	Méthode de purification: Purification par protéine G
Taille: 100ul , Concentration: 1000 µg/ml by Nanodrop;	Identification du gène (NCBI): 23367	CloneNo.: 2E9F2
Hôte: Mouse	Nom complet: La ribonucleoprotein domain family, member 1	Dilutions recommandées: IF 1:200-1:800
Isotype: IgG1	MW calculé 1096 aa, 124 kDa	Excitation/Emission maxima wavelengths: 557 nm / 570nm
Immunogen Catalog Number: AG29993	MW observés: 140-150 kDa	

Applications

Applications testées: FC (Intra), IF	Contrôles positifs: IF : cellules HepG2,
Spécificité de l'espèce: Humain, rat, souris	

Informations générales

LARP1, full named as La-related Protein 1, is an oncogenic RNA-binding protein required for ribosome biogenesis and cancer cell survival. (PMID: 32286153)It's has been proposed to function downstream of mTORC1 to regulate the translation of 5'TOP mRNAs such as those encoding ribosome proteins (RP). (PMID: 28650797) LARP1 has 2 isoforms with MW of 123-150KDa. With CL647, immunoflorescence detected location in cytoplasm.

Stockage

Stockage:
Stocker à -20 °C. Éviter toute exposition à la lumière. Stable pendant un an après l'expédition.
Tampon de stockage:
PBS avec glycérol à 50 %, Proclin300 à 0,05 % et BSA à 0,5 %, pH 7,3.
L'aliquotage n'est pas nécessaire pour le stockage à -20C

***** Les 20ul contiennent 0,1% de BSA.**

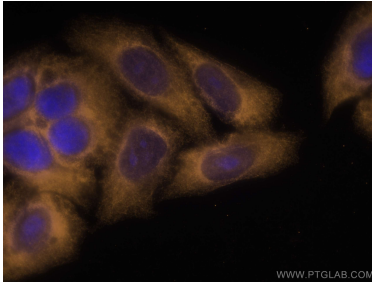
For technical support and original validation data for this product please contact:

T: 1 (888) 4PTGLAB (1-888-478-4522) (toll free
in USA), or 1(312) 455-8498 (outside USA)

E: proteintech@ptglab.com
W: ptglab.com

This product is exclusively available under Proteintech Group brand and is not available to purchase from any other manufacturer.

Données de validation sélectionnées



Immunofluorescent analysis of (-20°C Ethanol) fixed HepG2 cells using CoraLite®555 LARP1 antibody (CL555-67810, Clone: 2E9F2) at dilution of 1:400.

1X10⁶ HepG2 cells were intracellularly stained with 0.4 ug CoraLite®555 Anti-Human LARP1 (CL555-67810, Clone:2E9F2) (red), or 0.4 ug Control Antibody. Cells were fixed with 4% PFA and permeabilized with Flow Cytometry Perm Buffer (PF00011-C).