

À des fins de recherche uniquement

# Anticorps Recombinant de lapin anti- Phospho-S6 Ribosomal protein (Ser236)



Numéro de catalogue: **CL555-80206**

## Informations de base

Numéro de catalogue: CL555-80206	Numéro d'acquisition GenBank: BC000524	Méthode de purification: Purification par protéine A
Taille: 100ul , Concentration: 1000 µg/ml by Nanodrop;	Identification du gène (NCBI): 6194	CloneNo.: 7K17
Hôte: Lapin	Nom complet: ribosomal protein S6	Excitation/Emission maxima wavelengths: 557 nm / 570 nm
Isotype: IgG	MW calculé 29 kDa	
	MW observés: 32 kDa	

## Applications

Applications testées:  
FC (Intra)

Spécificité de l'espèce:  
Humain, souris

## Informations générales

Ribosomal protein S6 (RPS6) is one of the components of the 40S ribosomal subunit. RPS6 has been functionally regarded as the stimulator and/or inhibitor of certain types of mRNA translation, as well as the regulator of cellular metabolisms, cells size, survival and proliferation. RPS6 is phosphorylated at multiple sites, comprised between Ser235 and Ser247, by the p70 rpS6 kinase (S6K) 1, which is a major downstream effector of the mammalian target of rapamycin complex 1 (mTORC1). Phosphorylation of RPS6 at the dual site Ser235/236 occurs also independently of mTORC1, via the p90 ribosomal S6 kinases (RSK), which are activated by the extracellular signal-regulated kinases (ERK). Recent studies performed in pancreatic  $\beta$ -cells identified PKA as an additional RPS6 kinase, specifically involved in the phosphorylation of Ser235/236. (PMID: 26490682, PMID: 21814187, PMID: 31112404). 80206-1-RR specifically recognizes the phosphorylation site of Ser236 or dual site Ser235/236.

## Stockage

Stockage:  
Stocker à -20 °C. Éviter toute exposition à la lumière. Stable pendant un an après l'expédition.

Tampon de stockage:  
PBS avec glycérol à 50 %, Proclin300 à 0,05 % et BSA à 0,5 %, pH 7,3.

L'aliquotage n'est pas nécessaire pour le stockage à -20C

**\*\*\* Les 20ul contiennent 0,1% de BSA**

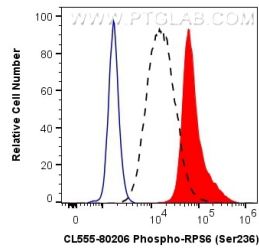
For technical support and original validation data for this product please contact:

T: 1 (888) 4PTGLAB (1-888-478-4522) (toll free  
in USA), or 1(312) 455-8498 (outside USA)

E: [proteintech@ptglab.com](mailto:proteintech@ptglab.com)  
W: [ptglab.com](http://ptglab.com)

This product is exclusively available under Proteintech Group brand and is not available to purchase from any other manufacturer.

## Données de validation sélectionnées



$1 \times 10^6$  HEK-293 cells untreated (dashed lines) or treated with Calyculin A (red) were intracellularly stained with 0.25  $\mu$ g CoraLite®555 Anti-Human Phospho-S6 Ribosomal protein (Ser236) (CL555-80206, Clone:7K17), or 0.25  $\mu$ g Control Antibody (blue). Cells were fixed with 4% PFA and permeabilized with 90% MeOH.