

À des fins de recherche uniquement

Anticorps Monoclonal anti-B23/NPM1



Numéro de catalogue: CL568-60096

Phare

Informations de base

Numéro de catalogue: CL568-60096	Numéro d'acquisition GenBank: BC002398	Méthode de purification: Purification par protéine G
Taille: 100ul , Concentration: 1000 µg/ml by Nanodrop;	Identification du gène (NCBI): 4869	CloneNo.: 4F12A3
Hôte: Mouse	Nom complet: nucleophosmin (nucleolar phosphoprotein B23, numatrin)	Dilutions recommandées: IF 1:500-1:2000
Isotype: IgG1	MW calculé 33 kDa	Excitation/Emission maxima wavelengths: 568 nm / 587 nm
Immunogen Catalog Number: AG7415	MW observés: 35-38 kDa	

Applications

Applications testées: FC (Intra), IF	Contrôles positifs: IF : cellules HeLa, cellules HepG2
Spécificité de l'espèce: Humain, rat, souris	

Informations générales

Nucleophosmin (NPM1,B23) is a putative ribosome assembly factor with a high affinity for peptides containing nuclear localization signals (NLSs). The transport of proteins across the nuclear envelope is a selective, multistep process involving several cytoplasmic factors. Proteins must be recognized as import substrates, dock at the nuclear pore complex and translocate across the nuclear envelope in an ATP-dependent fashion. Several cytosolic and nuclear proteins that are central to this process have been identified. The 38 kDa nuclear protein nucleophosmin is involved in ribosomal assembly and rRNA transport. It is an abundant protein that is highly phosphorylated by Cdc2 kinase during mitosis.

Stockage

Stockage:
Stocker à -20 °C. Éviter toute exposition à la lumière. Stable pendant un an après l'expédition.
Tampon de stockage:
PBS avec glycérol à 50 %, Proclin300 à 0,05 % et BSA à 0,5 %, pH 7,3.
L'aliquotage n'est pas nécessaire pour le stockage à -20C

***** Les 20ul contiennent 0,1% de BSA.**

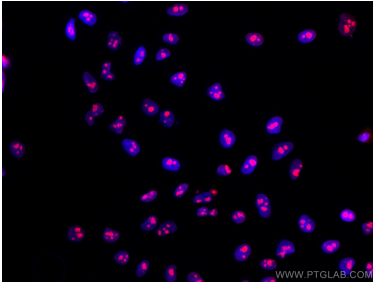
For technical support and original validation data for this product please contact:

T: 1 (888) 4PTGLAB (1-888-478-4522) (toll free
in USA), or 1(312) 455-8498 (outside USA)

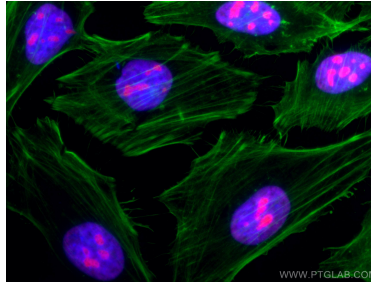
E: proteintech@ptglab.com
W: ptglab.com

This product is exclusively available under Proteintech Group brand and is not available to purchase from any other manufacturer.

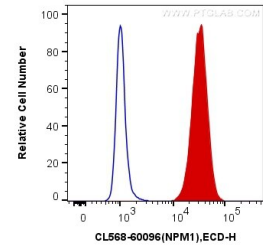
Données de validation sélectionnées



Immunofluorescent analysis of (4% PFA) fixed HepG2 cells using CoraLite@568 B23/NPM1 antibody (CL568-60096, Clone: 4F12A3) at dilution of 1:1000.



Immunofluorescent analysis of (4% PFA) fixed HeLa cells using CoraLite@568 B23/NPM1 antibody (CL568-60096, Clone: 4F12A3) at dilution of 1:1000, CL488-Phalloidin (green).



1X10⁶ HeLa cells were intracellularly stained with 0.4 ug CoraLite@568 Anti-Human B23/NPM1 (CL568-60096, Clone:4F12A3) (red), or 0.4 ug Control Antibody. Cells were fixed and permeabilized with Transcription Factor Staining Buffer Kit (PF00011).