

À des fins de recherche uniquement

Anticorps Polyclonal de lapin anti-Mitofilin



Numéro de catalogue: **CL594-10179** **Phare**

Informations de base

Numéro de catalogue: CL594-10179	Numéro d'acquisition GenBank: BC002412	Méthode de purification: Purification par affinité contre l'antigène
Taille: 100ul , Concentration: 1000 µg/ml by Nanodrop;	Identification du gène (NCBI): 10989	Dilutions recommandées: IF 1:50-1:500
Hôte: Lapin	Nom complet: inner membrane protein, mitochondrial (mitofilin)	Excitation/Emission maxima wavelengths: 588 nm / 604 nm
Isotype: IgG	MW calculé 90 kDa	
Immunogen Catalog Number: AG0102	MW observés: 80-90 kDa	

Applications

Applications testées: FC (Intra), IF	Contrôles positifs: IF : cellules HeLa,
Spécificité de l'espèce: Humain, rat, souris	

Informations générales

IMMT (also known as mitofilin) is an inner mitochondrial membrane protein that is preferentially expressed in heart tissue and is commonly used as the marker for mitochondria. Mitofilin is known to be a critical organizer of mitochondrial cristae morphology and is indispensable for normal mitochondrial function. Three isoforms of mitofilin exist due to the alternative splicing. All three proteins of 87kD, 89kD and 80kD can be detected in immunoblot analysis with this antibody.

Stockage

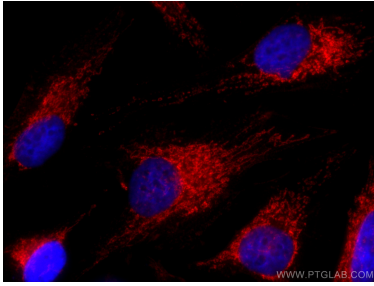
Stockage:
Stocker à -20 °C. Éviter toute exposition à la lumière.
Tampon de stockage:
PBS avec glycérol à 50 %, Proclin300 à 0,05 % et BSA à 0,5 %, pH 7,3.
L'aliquotage n'est pas nécessaire pour le stockage à -20C

***** Les 20ul contiennent 0,1% de BSA.**

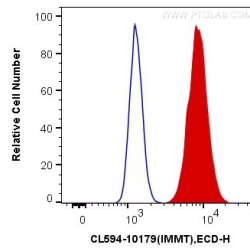
For technical support and original validation data for this product please contact:
T: 1 (888) 4PTGLAB (1-888-478-4522) (toll free in USA), or 1(312) 455-8498 (outside USA) E: proteintech@ptglab.com W: ptglab.com

This product is exclusively available under Proteintech Group brand and is not available to purchase from any other manufacturer.

Données de validation sélectionnées



Immunofluorescent analysis of (4% PFA) fixed HeLa cells using CoraLite®594 Mitofilin antibody (CL594-10179) at dilution of 1:100.



1X10⁶ HEK-293T cells were intracellularly stained with 0.4 ug CoraLite®594 Anti-Human Mitofilin (CL594-10179) (red), or 0.4 ug Control Antibody. Cells were fixed with 4% PFA and permeabilized with Flow Cytometry Perm Buffer (PF00011-C).