

À des fins de recherche uniquement

# Anticorps Polyclonal de lapin anti-transgeline/SM22



Numéro de catalogue: CL594-10493

Phare

## Informations de base

Numéro de catalogue: CL594-10493	Numéro d'acquisition GenBank: BC004927	Méthode de purification: Purification par affinité contre l'antigène
Taille: 100ul, Concentration: 1000 µg/ml by Nanodrop;	Identification du gène (NCBI): 6876	Dilutions recommandées: IF 1:50-1:500
Hôte: Lapin	Nom complet: transgeline	Excitation/Emission maxima wavelengths: 588 nm / 604 nm
Isotype: IgG	MW calculé: 22 kDa	
Immunogen Catalog Number: AG0764	MW observés: 19-22 kDa	

## Applications

Applications testées: IF	Contrôles positifs: IF : tissu cardiaque de souris,
Spécificité de l'espèce: Humain, rat, souris	

## Informations générales

The transgeline family is a group of proteins that belong to 22kd actin-related calponin superfamily. Of all three isoforms, transgeline 1 is the best characterized. Transgeline 1, also known as SM22alpha, is a specific marker for differentiated smooth muscle cells. Transgeline 2, also known as SM22 beta, is expressed by both smooth muscle and non-smooth muscle cells in a temporally and spatially regulated pattern. Transgeline 3, also known as NP25, is only found in highly differentiated neuronal cells. This antibody was generated against full length transgeline 1 protein. It can cross-react with other two transgelins based on the sequence similarity.

## Stockage

**Stockage:**  
Stocker à -20 °C. Éviter toute exposition à la lumière.  
**Tampon de stockage:**  
PBS avec glycérol à 50 %, Proclin300 à 0,05 % et BSA à 0,5 %, pH 7,3.  
L'aliquotage n'est pas nécessaire pour le stockage à -20C

\*\*\* Les 20ul contiennent 0,1% de BSA.

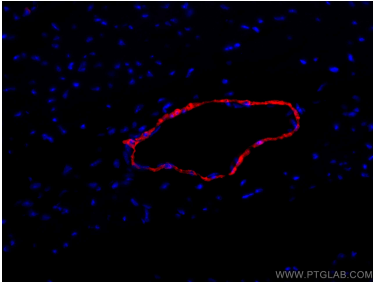
For technical support and original validation data for this product please contact:

T: 1 (888) 4PTGLAB (1-888-478-4522) (toll free in USA), or 1(312) 455-8498 (outside USA)

E: [proteintech@ptglab.com](mailto:proteintech@ptglab.com)  
W: [ptglab.com](http://ptglab.com)

This product is exclusively available under Proteintech Group brand and is not available to purchase from any other manufacturer.

## Données de validation sélectionnées



Immunofluorescent analysis of (4% PFA) fixed mouse heart tissue using CoraLite®594 transgelin/SM22 antibody (CL594-10493) at dilution of 1:200.