

À des fins de recherche uniquement

Anticorps Polyclonal de lapin anti-KEAP1



Numéro de catalogue: **CL594-10503** **Phare**

Informations de base

| | | |
|--|--|--|
| Numéro de catalogue: CL594-10503 | Numéro d'acquisition GenBank: BC002930 | Méthode de purification: Purification par affinité contre l'antigène |
| Taille: 100ul , Concentration: 1000 µg/ml by Nanodrop; | Identification du gène (NCBI): 9817 | Dilutions recommandées: IF 1:50-1:500 |
| Hôte: Lapin | Nom complet: kelch-like ECH-associated protein 1 | Excitation/Emission maxima wavelengths: 588 nm / 604 nm |
| Isotype: IgG | MW calculé: 624 aa, 70 kDa | |
| Immunogen Catalog Number: AG0779 | MW observés: 70 kDa | |

Applications

| | |
|--|--|
| Applications testées: IF | Contrôles positifs: IF : tissu de cancer du sein humain, |
| Spécificité de l'espèce: Humain, rat, souris | |

Informations générales

KEAP1, also named as INRF2, KIAA0132 and KLHL19, is part of a multiprotein complex that contains the CUL3-ROC1 ubiquitin ligase, which can ubiquitinate the N-terminal domain of NRF2 [PMID: 20173742]. Two molecules of KEAP1 bind to two distinct sites in the N-terminal region of NRF2, the ETGE and DLG sites, which affect the KEAP1-NRF2 interaction and/or its physiological consequences [PMID: 22215675]. KEAP1 retains NFE2L2/NRF2 in the cytosol. It functions as substrate adapter protein for the E3 ubiquitin ligase complex formed by CUL3 and RBX1 [PMID: 20427290]. It also retains BPTF in the cytosol. This antibody is a rabbit polyclonal antibody raised against residues near the C terminus of human KEAP1.

Read more about this antibody on the blog: <http://blog.ptglab.com/index.php/nsclc-research-anti-keap1-antibody-helps-uncover-targets-biomarker-potential/>

Stockage

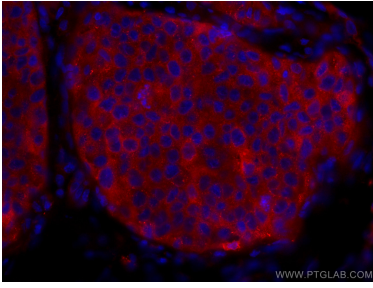
Stockage:
Stocker à -20 °C. Éviter toute exposition à la lumière.
Tampon de stockage:
PBS avec glycérol à 50 %, Proclin300 à 0,05 % et BSA à 0,5 %, pH 7,3.
L'aliquotage n'est pas nécessaire pour le stockage à -20C

***** Les 20ul contiennent 0,1% de BSA.**

For technical support and original validation data for this product please contact:
T: 1 (888) 4PTGLAB (1-888-478-4522) (toll free in USA), or 1(312) 455-8498 (outside USA) E: proteintech@ptglab.com W: ptglab.com

This product is exclusively available under Proteintech Group brand and is not available to purchase from any other manufacturer.

Données de validation sélectionnées



Immunofluorescent analysis of (4% PFA) fixed human breast cancer tissue using CoraLite®594 KEAP1 antibody (CL594-10503) at dilution of 1:200.