

À des fins de recherche uniquement

Anticorps Polyclonal de lapin anti-Palladin



Numéro de catalogue: **CL594-10853**

Phare

Informations de base

Numéro de catalogue:

CL594-10853

Taille:

100ul, Concentration: 1000 µg/ml by Nanodrop;

Hôte:

Lapin

Isotype:

IgG

Immunogen Catalog Number:

AG1288

Numéro d'acquisition GenBank:

BC013867

Identification du gène (NCBI):

23022

Nom complet:

palladin, cytoskeletal associated protein

MW calculé

1383 aa, 151 kDa

Méthode de purification:

Purification par affinité contre l'antigène

Dilutions recommandées:

IF 1:50-1:500

Excitation/Emission maxima wavelengths:

588 nm / 604 nm

Applications

Applications testées:

FC (Intra), IF

Spécificité de l'espèce:

Humain

Contrôles positifs:

IF : cellules HeLa,

Informations générales

Palladin is an actin associated protein serving as a cytoskeleton scaffold, and actin cross linker, localizing at stress fibers, focal adhesions, and other actin based structures. Palladin exists as multiple isoforms through alternative transcription initiation sites and splicing. There are three major isoforms (200, 140, 90-92 kDa) and multiple minor isoforms. Different palladin isoforms are expressed in a tissue-specific pattern during development and in adult organs: the 200 kDa isoform is predominantly expressed in the heart, skeletal muscle, testis and bone; the 140 kDa isoform is widely expressed with the exception of liver, muscle, and skin; the 90-92 kDa isoform is broadly expressed in embryonic tissues and highly expressed in adult smooth muscle tissues (21455759). Recently overexpression of palladin has been linked to the promoted invasive motility in several types of cancers (18978809, 22291919). The 85-90 kDa palladin isoform has been observed predominantly expressed in pancreatic ductal adenocarcinoma (PDA) while a 65 kDa isoform is expressed in normal pancreas and non-PDA tumors (20436683). This antibody, generated against the fragment 999-1383aa of palladin, recognizes most isoforms of this protein, except isoform 6.

Stockage

Stockage:

Stocker à -20 °C. Éviter toute exposition à la lumière.

Tampon de stockage:

PBS avec glycérol à 50 %, Proclin300 à 0,05 % et BSA à 0,5 %, pH 7,3.

L'aliquotage n'est pas nécessaire pour le stockage à -20C

***** Les 20ul contiennent 0,1% de BSA.**

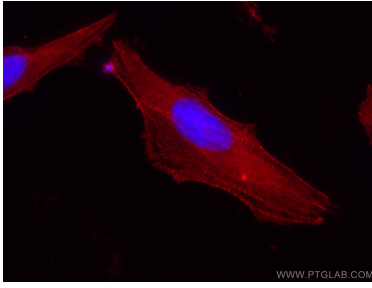
For technical support and original validation data for this product please contact:

T: 1 (888) 4PTGLAB (1-888-478-4522) (toll free in USA), or 1(312) 455-8498 (outside USA)

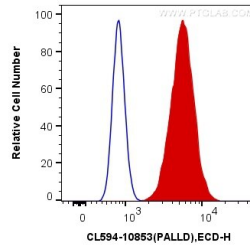
E: proteintech@ptglab.com
W: ptglab.com

This product is exclusively available under Proteintech Group brand and is not available to purchase from any other manufacturer.

Données de validation sélectionnées



Immunofluorescent analysis of (-20°C Ethanol) fixed HeLa cells using CoraLite®594 Palladin antibody (CL594-10853) at dilution of 1:200.



1X10⁶ HeLa cells were intracellularly stained with 0.2 ug CoraLite®594 Anti-Human Palladin (CL594-10853) (red), or 0.2 ug Control Antibody. Cells were fixed with 4% PFA and permeabilized with Flow Cytometry Perm Buffer (PF00011-C).