

À des fins de recherche uniquement

# Anticorps Polyclonal de lapin anti-SOX2



Numéro de catalogue: **CL594-11064** **Phare**

## Informations de base

Numéro de catalogue: CL594-11064	Numéro d'acquisition GenBank: BC013923	Méthode de purification: Purification par affinité contre l'antigène
Taille: 100ul , Concentration: 1000 µg/ml by Nanodrop;	Identification du gène (NCBI): 6657	Dilutions recommandées: IF 1:50-1:500
Hôte: Lapin	Nom complet: SRY (sex determining region Y)-box 2	Excitation/Emission maxima wavelengths: 588 nm / 604 nm
Isotype: IgG	MW calculé: 34 kDa	
Immunogen Catalog Number: AG1530	MW observés: 34-40 kDa	

## Applications

Applications testées: IF	Contrôles positifs: IF : tissu cérébral de souris,
Spécificité de l'espèce: Humain, poisson-zèbre, rat, souris	

## Informations générales

Sox2, also known as SRY (sex determining region Y)-box 2, is a transcription factor essential for maintaining self-renewal of undifferentiated ES cells and is one of the key transcription factors used to reprogram mouse and human fibroblasts to a pluripotent state. Sox2 expressed in undifferentiated pluripotent stem cells and germ cells during development. Affinity purified rabbit anti-Sox2 antibody can be used to demonstrate pluripotency of ES and iPS cells. This antibody is a rabbit polyclonal antibody raised against an internal region of human SOX2. a rare undifferentiated cell population that is intermingled with the Bergmann glia of the adult murine cerebellar cortex, expresses the stem cell markers Sox2 and Nestin, and lacks markers of glial or neuronal differentiation. Sox2-expressing neural stem cells in the subgranular zone (SGZ) , a well-known stem cell niche of the adult brain.

## Stockage

**Stockage:**  
Stocker à -20 °C. Éviter toute exposition à la lumière.  
**Tampon de stockage:**  
PBS avec glycérol à 50 %, Proclin300 à 0,05 % et BSA à 0,5 %, pH 7,3.  
L'aliquotage n'est pas nécessaire pour le stockage à -20C

**\*\*\* Les 20ul contiennent 0,1% de BSA.**

For technical support and original validation data for this product please contact:

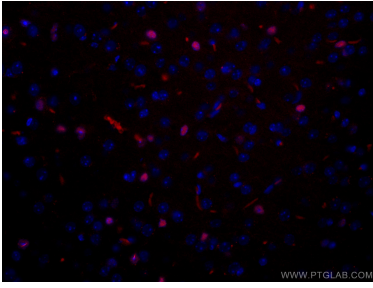
T: 1 (888) 4PTGLAB (1-888-478-4522) (toll free in USA), or 1(312) 455-8498 (outside USA)

E: [proteintech@ptglab.com](mailto:proteintech@ptglab.com)  
W: [ptglab.com](http://ptglab.com)

**This product is exclusively available under Proteintech Group brand and is not available to purchase from any other manufacturer.**

---

## Données de validation sélectionnées



Immunofluorescent analysis of (4% PFA) fixed mouse brain tissue using CoraLite® 594 SOX2 antibody (CL594-11064) at dilution of 1:100.