

À des fins de recherche uniquement

Anticorps Polyclonal de lapin anti-CD31



Numéro de catalogue: **CL594-11265**

Phare

1 Publications

Informations de base

Numéro de catalogue:

CL594-11265

Taille:

100ul , Concentration: 1000 µg/ml by Nanodrop;

Hôte:

Lapin

Isotype:

IgG

Immunogen Catalog Number:

AG1787

Numéro d'acquisition GenBank:

BC022512

Identification du gène (NCBI):

5175

Nom complet:

platelet/endothelial cell adhesion molecule

MW calculé

83 kDa

Méthode de purification:

Purification par affinité contre l'antigène

Dilutions recommandées:

IF 1:50-1:500

Excitation/Emission maxima wavelengths:

588 nm / 604 nm

Applications

Applications testées:

IF

Demandes citées:

IF

Spécificité de l'espèce:

Humain

Espèces citées:

Humain

Contrôles positifs:

IF : tissu de cancer du sein humain, cellules HUVEC, tissu d'amygdalite humain

Informations générales

Platelet endothelial cell adhesion molecule-1 (PECAM-1, CD31) is a member of the immunoglobulin gene superfamily of cell adhesion molecules. CD31 is a transmembrane glycoprotein that is highly expressed on the surface of the endothelium, making up a large portion of its intracellular junctions. PECAM-1 is also present on the surface of hematopoietic cells and immune cells including platelets, monocytes, neutrophils, natural killer cells, megakaryocytes and some types of T-cell (PMID: 9011572). As well as its role in cell-cell adhesion, PECAM-1 functions as a signaling receptor, and is involved in important physiological events such as nitric oxide production, regulation of T-cell immunity and tolerance, leukocyte transendothelial migration and inflammation and angiogenesis (PMID: 21183735; 20978210; 17872453; 20634489).

Publications notables

Autrice	Pubmed ID	Journal	Application
Yong-Hong Wang	34256842	Stem Cell Res Ther	IF

Stockage

Stockage:

Stocker à -20 °C. Éviter toute exposition à la lumière. Stable pendant un an après l'expédition.

Tampon de stockage:

PBS avec glycérol à 50 %, Proclin300 à 0,05 % et BSA à 0,5 %, pH 7,3.

L'aliquotage n'est pas nécessaire pour le stockage à -20C

*** Les 20ul contiennent 0,1% de BSA.

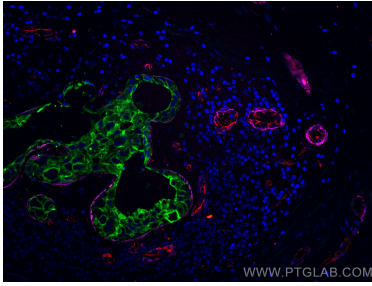
For technical support and original validation data for this product please contact:

T: 1 (888) 4PTGLAB (1-888-478-4522) (toll free in USA), or 1(312) 455-8498 (outside USA)

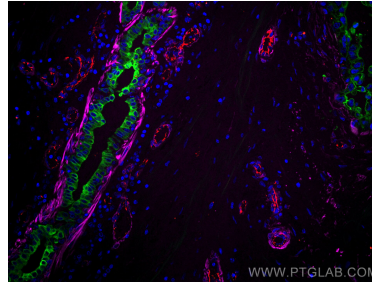
E: proteintech@ptglab.com
W: ptglab.com

This product is exclusively available under Proteintech Group brand and is not available to purchase from any other manufacturer.

Données de validation sélectionnées



Immunofluorescent analysis of (4% PFA) fixed human breast cancer tissue using CoraLite®594 CD31 antibody (CL594-11265) at dilution of 1:200, CoraLite®488 Cytokeratin 7 antibody (CL488-15539, green), CoraLite® Plus 647 smooth muscle actin specific antibody (CL647-67735, Clone: 1E9A11, magenta).



Immunofluorescent analysis of (4% PFA) fixed human breast cancer tissue using CoraLite®594 CD31 antibody (CL594-11265) at dilution of 1:200, CoraLite®488 Cytokeratin 7 antibody (CL488-15539, green), CoraLite® Plus 647 smooth muscle actin specific antibody (CL647-67735, Clone: 1E9A11, magenta).