

À des fins de recherche uniquement

Anticorps Polyclonal de lapin anti-RBM4



Numéro de catalogue: **CL594-11614** **Phare**

Informations de base

Numéro de catalogue: CL594-11614	Numéro d'acquisition GenBank: BC021120	Méthode de purification: Purification par affinité contre l'antigène
Taille: 100ul , Concentration: 1000 µg/ml by Nanodrop;	Identification du gène (NCBI): 5936	Dilutions recommandées: IF 1:50-1:500
Hôte: Lapin	Nom complet: RNA binding motif protein 4	Excitation/Emission maxima wavelengths: 588 nm / 604 nm
Isotype: IgG	MW calculé 40 kDa	
Immunogen Catalog Number: AG2190		

Applications

Applications testées: FC (Intra), IF	Contrôles positifs: IF : cellules HeLa, cellules HepG2
Spécificité de l'espèce: Humain, rat, souris	

Informations générales

RBM4, RNA-binding motif protein4, contains 2 RRM-type RNA-binding motif and a retroviral-type(RT) zinc finger. RNA-binding factor participates in number of aspects of cellular processes such as alternative splicing of pre-mRNA and translation regulation. RBM4 recruits eIF4A1 to stimulate IRES-dependent translation in responds to cellular stress. Once assembled at the rHRE, the HIF2A-RBM4-eIF4E2 complex captures the 5-prime cap and targets mRNAs to polysomes for active translation, thereby evading hypoxia-induced repression of protein synthesis. This is a rabbit polyclonal antibody raised against the full-length of human RBM4

Stockage

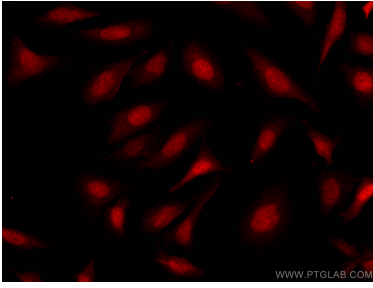
Stockage:
Stocker à -20 °C. Éviter toute exposition à la lumière.
Tampon de stockage:
PBS avec glycérol à 50 %, Proclin300 à 0,05 % et BSA à 0,5 %, pH 7,3.
L'aliquotage n'est pas nécessaire pour le stockage à -20C

***** Les 20ul contiennent 0,1% de BSA.**

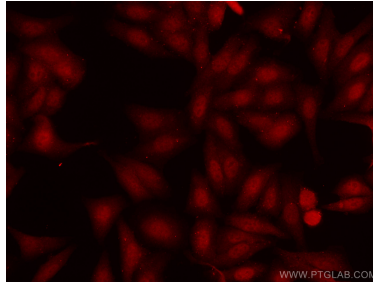
For technical support and original validation data for this product please contact:
T: 1 (888) 4PTGLAB (1-888-478-4522) (toll free in USA), or 1(312) 455-8498 (outside USA) E: proteintech@ptglab.com W: ptglab.com

This product is exclusively available under Proteintech Group brand and is not available to purchase from any other manufacturer.

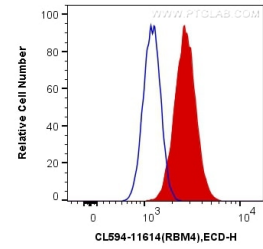
Données de validation sélectionnées



Immunofluorescent analysis of (4% PFA) fixed HeLa cells using CoraLite@594-conjugated RBM4 antibody (CL594-11614) at dilution of 1:100.



Immunofluorescent analysis of (4% PFA) fixed HepG2 cells using CoraLite@594-conjugated RBM4 antibody (CL594-11614) at dilution of 1:100.



1X10⁶ HeLa cells were intracellularly stained with 0.4 ug CoraLite@594 Anti-Human RBM4 (CL594-11614) (red), or 0.4 ug Control Antibody. Cells were fixed with 4% PFA and permeabilized with Flow Cytometry Perm Buffer (PF00011-C).