

À des fins de recherche uniquement

Anticorps Polyclonal de lapin anti-IFITM3



Numéro de catalogue: **CL594-11714** **Phare**

Informations de base

Numéro de catalogue: CL594-11714	Numéro d'acquisition GenBank: BC006794	Méthode de purification: Purification par affinité contre l'antigène
Taille: 100ul , Concentration: 1000 µg/ml by Nanodrop;	Identification du gène (NCBI): 10410	Dilutions recommandées: IF 1:50-1:500
Hôte: Lapin	Nom complet: interferon induced transmembrane protein 3 (1-8U)	Excitation/Emission maxima wavelengths: 588 nm / 604 nm
Isotype: IgG	MW calculé: 133 aa, 15 kDa	
Immunogen Catalog Number: AG2285	MW observés: 14 kDa	

Applications

Applications testées: FC (Intra), IF	Contrôles positifs: IF : cellules HeLa,
Spécificité de l'espèce: Humain, rat, souris	

Informations générales

IFITM3, also named as interferon-inducible protein 1-8U, belongs to the CD225 family. It is IFN-induced antiviral protein that mediates cellular innate immunity to at least three major human pathogens, namely influenza A H1N1 virus, West Nile virus (WNV), and dengue virus, by inhibiting the early steps of replication. IFITM3 is identified as interferon-induced cellular proteins that restrict infections by retroviruses and filoviruses and of influenza virus and flaviviruses, respectively. IFITM3, the most potent antiviral IFITM, was found to inhibit an uncharacterized early infectious event after VSV endocytosis, but before primary transcription of its viral genome. IFITM proteins are viral restriction factors that can inhibit infection mediated by the influenza A virus (IAV) hemagglutinin (HA) protein. They differentially restrict the entry of a broad range of enveloped viruses, and modulate cellular tropism independently of viral receptor expression. Catalog#11714-1-AP is a rabbit polyclonal antibody raised against the full-length of human IFITM3.

Stockage

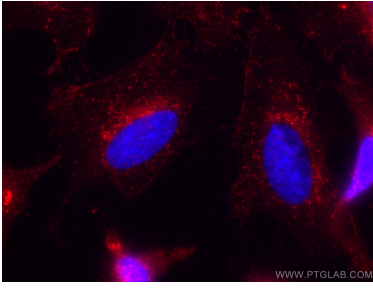
Stockage:
Stocker à -20 °C. Éviter toute exposition à la lumière.
Tampon de stockage:
PBS avec glycérol à 50 %, Proclin300 à 0,05 % et BSA à 0,5 %, pH 7,3.
L'aliquotage n'est pas nécessaire pour le stockage à -20C

***** Les 20ul contiennent 0,1% de BSA.**

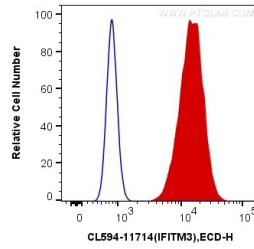
For technical support and original validation data for this product please contact:
T: 1 (888) 4PTGLAB (1-888-478-4522) (toll free in USA), or 1(312) 455-8498 (outside USA) E: proteintech@ptglab.com W: ptglab.com

This product is exclusively available under Proteintech Group brand and is not available to purchase from any other manufacturer.

Données de validation sélectionnées



Immunofluorescent analysis of (-20°C Ethanol) fixed HeLa cells using CoraLite@594 IFITM3 antibody (CL594-11714) at dilution of 1:100.



1X10⁶ HeLa cells were intracellularly stained with 0.2 ug CoraLite@594 Anti-Human IFITM3 (CL594-11714) (red), or 0.2 ug Control Antibody. Cells were fixed with 4% PFA and permeabilized with Flow Cytometry Perm Buffer (PF00011-C).