

À des fins de recherche uniquement

Anticorps Polyclonal de lapin anti-ASGR1



Numéro de catalogue: **CL594-11739**

Phare

Informations de base

Numéro de catalogue: CL594-11739	Numéro d'acquisition GenBank: BC032130	Méthode de purification: Purification par affinité contre l'antigène
Taille: 100ul , Concentration: 1000 µg/ml by Nanodrop;	Identification du gène (NCBI): 432	Dilutions recommandées: IF 1:50-1:500
Hôte: Lapin	Nom complet: asialoglycoprotein receptor 1	Excitation/Emission maximum wavelengths: 588 nm / 604 nm
Isotype: IgG	MW calculé 291 aa, 33 kDa	
Immunogen Catalog Number: AG2310		

Applications

Applications testées: IF	Contrôles positifs: IF : tissu de cancer du foie humain,
Spécificité de l'espèce: Humain, rat, souris	

Informations générales

Asialoglycoprotein receptor (ASGPR), also known as the hepatic galactose/N-acetylglucosamine (GlcNAc) receptor or Ashwell receptor, is a C-type lectin expressed exclusively in hepatic parenchymal cells. ASGPR consists of two subunits, a major subunit (ASGR1, HL-1) and a minor subunit (ASGR2, HL-2), and specifically recognizes terminal β -linked galactose or GlcNAc on circulating glycoproteins or cells. This receptor plays a critical role in serum glycoprotein homeostasis by mediating the endocytosis and lysosomal degradation of glycoproteins that contain terminal galactose or GlcNAc residues. ASGPR may facilitate hepatic infection by multiple viruses including hepatitis B, and is also a target for liver-specific drug delivery.

Stockage

Stockage:
Stocker à -20 °C. Éviter toute exposition à la lumière.
Tampon de stockage:
PBS avec glycérol à 50 %, Proclin300 à 0,05 % et BSA à 0,5 %, pH 7,3.
L'aliquotage n'est pas nécessaire pour le stockage à -20C

***** Les 20ul contiennent 0,1% de BSA.**

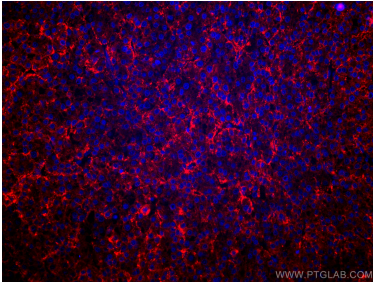
For technical support and original validation data for this product please contact:

T: 1 (888) 4PTGLAB (1-888-478-4522) (toll free in USA), or 1(312) 455-8498 (outside USA)

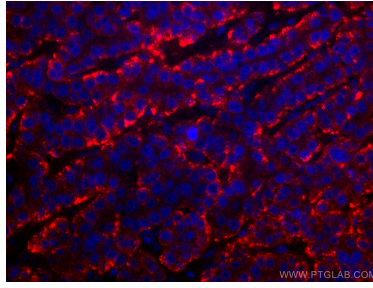
E: proteintech@ptglab.com
W: ptglab.com

This product is exclusively available under Proteintech Group brand and is not available to purchase from any other manufacturer.

Données de validation sélectionnées



Immunofluorescent analysis of (4% PFA) fixed human liver cancer tissue using CoraLite®594 ASGR1 antibody (CL594-11739) at dilution of 1:200.



Immunofluorescent analysis of (4% PFA) fixed human liver cancer tissue using CoraLite®594 ASGR1 antibody (CL594-11739) at dilution of 1:200.