

À des fins de recherche uniquement

# Anticorps Polyclonal de lapin anti-SAMHD1



Numéro de catalogue: **CL594-12586**

Phare

## Informations de base

<b>Numéro de catalogue:</b> CL594-12586	<b>Numéro d'acquisition GenBank:</b> BC036450	<b>Méthode de purification:</b> Purification par affinité contre l'antigène
<b>Taille:</b> 100ul , Concentration: 1000 µg/ml by Nanodrop;	<b>Identification du gène (NCBI):</b> 25939	<b>Dilutions recommandées:</b> IF 1:200-1:800
<b>Hôte:</b> Lapin	<b>Nom complet:</b> SAM domain and HD domain 1	<b>Excitation/Emission maxima wavelengths:</b> 588 nm / 604 nm
<b>Isotype:</b> IgG	<b>MW calculé:</b> 626 aa, 72 kDa	
<b>Immunogen Catalog Number:</b> AG3287	<b>MW observés:</b> 64-72 kDa	

## Applications

<b>Applications testées:</b> FC (Intra), IF	<b>Contrôles positifs:</b> IF : cellules HepG2, cellules A549
<b>Spécificité de l'espèce:</b> Humain, rat, souris	

## Informations générales

SAMHD1, highly expressed by monocytes and monocyte-derived dendritic cells and by monocyte-derived macrophages at a lower extent, is reported as an HIV-1 restriction factor that inhibits the early step of the HIV-1 life cycle. Vpx (virus-like particles containing viral protein X) could overcome this block by interacting with SAMHD1, inducing proteasome-dependent degradation of SAMHD1. Mutations in SAMHD1 cause Aicardi-Goutières syndrome, a genetic encephalopathy with a presumed immune pathogenesis. Three alternatively spliced transcripts encoding different isoforms have been described.

## Stockage

**Stockage:**  
Stocker à -20 °C. Éviter toute exposition à la lumière. Stable pendant un an après l'expédition.  
**Tampon de stockage:**  
PBS avec glycérol à 50 %, Proclin300 à 0,05 % et BSA à 0,5 %, pH 7,3.  
L'aliquotage n'est pas nécessaire pour le stockage à -20C

**\*\*\* Les 20ul contiennent 0,1% de BSA.**

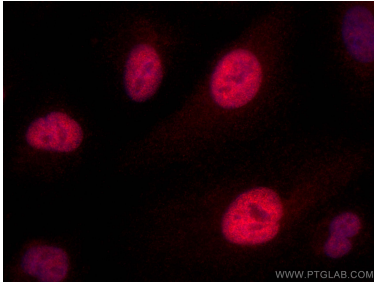
For technical support and original validation data for this product please contact:

T: 1 (888) 4PTGLAB (1-888-478-4522) (toll free in USA), or 1(312) 455-8498 (outside USA)

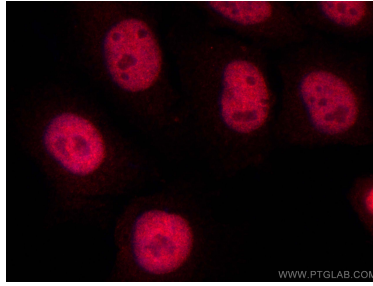
E: [proteintech@ptglab.com](mailto:proteintech@ptglab.com)  
W: [ptglab.com](http://ptglab.com)

**This product is exclusively available under Proteintech Group brand and is not available to purchase from any other manufacturer.**

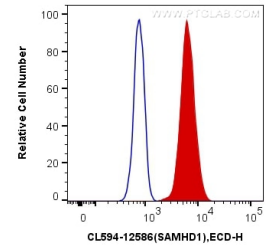
## Données de validation sélectionnées



Immunofluorescent analysis of (4% PFA) fixed A549 cells using CoraLite®594 SAMHD1 antibody (CL594-12586) at dilution of 1:400.



Immunofluorescent analysis of (4% PFA) fixed HepG2 cells using CoraLite®594 SAMHD1 antibody (CL594-12586) at dilution of 1:400.



1X10<sup>6</sup> HepG2 cells were intracellularly stained with 0.4 ug CoraLite®594 Anti-Human SAMHD1 (CL594-12586) (red), or 0.4 ug Control Antibody. Cells were fixed and permeabilized with Transcription Factor Staining Buffer Kit (PF00011).