

À des fins de recherche uniquement

Anticorps Polyclonal de lapin anti-S100 Beta



Numéro de catalogue: **CL594-15146**

Informations de base

Numéro de catalogue:

CL594-15146

Numéro d'acquisition GenBank:

BC001766

Méthode de purification:

Purification par affinité contre l'antigène

Taille:

100ul, Concentration: 1000 µg/ml by Nanodrop;

Identification du gène (NCBI):

6285

Dilutions recommandées:

IF 1:50-1:500

Hôte:

Lapin

Nom complet:

S100 calcium binding protein B

Excitation/Emission maxima

wavelengths:

588 nm / 604 nm

Isotype:

IgG

MW calculé

11 kDa

Immunogen Catalog Number:

AG7440

Applications

Applications testées:

IF

Contrôles positifs:

IF : tissu de mélanome malin humain, tissu cérébral de souris

Spécificité de l'espèce:

Humain, souris

Informations générales

S100B is a member of the S100 family of proteins containing 2 EF-hand calcium-binding motifs and has been implicated in the regulation of cellular activities such as metabolism, motility and proliferation. In the nervous system, S100B is constitutively released by astrocytes into the extracellular space and at nanomolar concentrations, it can promote neurite outgrowth and protect neurons against oxidative stress. Within the central nervous system (CNS), S100B is thought to be a marker for astroglial activation, linking astrocyte dysfunction to schizophrenia. In addition to astrocytes, S100B is released from many cell types, such as, adipocytes, chondrocytes, cardiomyocytes and lymphocytes. Serum S100B represents a new biomarker for mood disorders.

Stockage

Stockage:

Stocker à -20 °C. Éviter toute exposition à la lumière. Stable pendant un an après l'expédition.

Tampon de stockage:

PBS avec glycérol à 50 %, Proclin300 à 0,05 % et BSA à 0,5 %, pH 7,3.

L'aliquotage n'est pas nécessaire pour le stockage à -20C

***** Les 20ul contiennent 0,1% de BSA.**

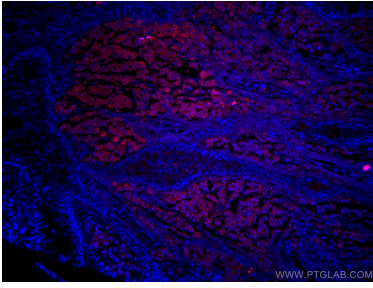
For technical support and original validation data for this product please contact:

T: 1 (888) 4PTGLAB (1-888-478-4522) (toll free in USA), or 1(312) 455-8498 (outside USA)

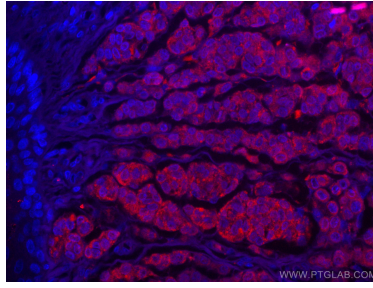
E: proteintech@ptglab.com
W: ptglab.com

This product is exclusively available under Proteintech Group brand and is not available to purchase from any other manufacturer.

Données de validation sélectionnées



Immunofluorescent analysis of (4% PFA) fixed human malignant melanoma tissue using CoraLite® 594 S100 Beta antibody (CL594-15146) at dilution of 1:100.



Immunofluorescent analysis of (4% PFA) fixed human malignant melanoma tissue using CoraLite® 594 S100 Beta antibody (CL594-15146) at dilution of 1:100.