

À des fins de recherche uniquement

Anticorps Polyclonal de lapin anti-Desmin



Numéro de catalogue: **CL594-16520**

Informations de base

Numéro de catalogue: CL594-16520	Numéro d'acquisition GenBank: BC032116	Méthode de purification: Purification par affinité contre l'antigène
Taille: 100ul , Concentration: 1000 µg/ml by Nanodrop;	Identification du gène (NCBI): 1674	Dilutions recommandées: IF 1:50-1:500
Hôte: Lapin	Nom complet: desmin	Excitation/Emission maxima wavelengths: 588 nm / 604 nm
Isotype: IgG	MW calculé 470 aa, 54 kDa	
Immunogen Catalog Number: AG9742	MW observés: 52-53 kDa	

Applications

Applications testées: FC (Intra), IF	Contrôles positifs: IF : tissu cardiaque de souris,
Spécificité de l'espèce: Humain, rat, souris	

Informations générales

Desmin is the main intermediate filament protein in skeletal and cardiac muscle cells and is essential for both the structural integrity and the survival of muscle cells. As an abundant muscle-specific protein, desmin has been widely used as a marker of muscle derived tumors. Anti-desmin is also valuable in the differential diagnosis of tumors of uncertain origin.

Stockage

Stockage:
Stocker à -20 °C. Éviter toute exposition à la lumière. Stable pendant un an après l'expédition.
Tampon de stockage:
PBS avec glycérol à 50 %, Proclin300 à 0,05 % et BSA à 0,5 %, pH 7,3.
L'aliquotage n'est pas nécessaire pour le stockage à -20C

***** Les 20ul contiennent 0,1% de BSA.**

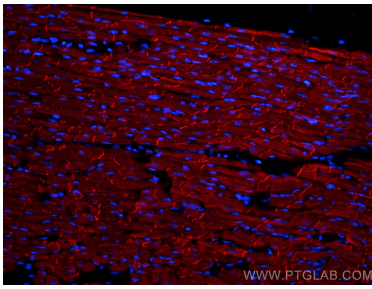
For technical support and original validation data for this product please contact:

T: 1 (888) 4PTGLAB (1-888-478-4522) (toll free in USA), or 1(312) 455-8498 (outside USA)

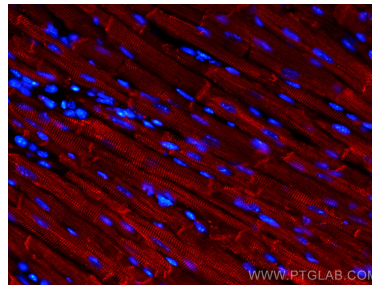
E: proteintech@ptglab.com
W: ptglab.com

This product is exclusively available under Proteintech Group brand and is not available to purchase from any other manufacturer.

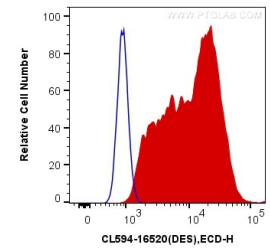
Données de validation sélectionnées



Immunofluorescent analysis of (4% PFA) fixed mouse heart tissue using CoraLite@594 Desmin antibody (CL594-16520) at dilution of 1:200.



Immunofluorescent analysis of (4% PFA) fixed mouse heart tissue using CoraLite@594 Desmin antibody (CL594-16520) at dilution of 1:200.



1×10^6 C2C12 cells were intracellularly stained with 0.4 ug CoraLite@594 Anti-Human Desmin (CL594-16520) (red), or 0.4 ug Control Antibody. Cells were fixed with 4% PFA and permeabilized with Flow Cytometry Perm Buffer (PF00011-C).