

À des fins de recherche uniquement

Anticorps Polyclonal de lapin anti-MAP2



Numéro de catalogue: **CL594-17490**

Informations de base

Numéro de catalogue: CL594-17490	Numéro d'acquisition GenBank: BC038857	Méthode de purification: Purification par affinité contre l'antigène
Taille: 100ul , Concentration: 1000 µg/ml by Nanodrop;	Identification du gène (NCBI): 4133	Dilutions recommandées: IF 1:50-1:500
Hôte: Lapin	Nom complet: microtubule-associated protein 2	Excitation/Emission maxima wavelengths: 588 nm / 604 nm
Isotype: IgG	MW calculé 200 kDa	
Immunogen Catalog Number: AG11580		

Applications

Applications testées: FC (Intra), IF	Contrôles positifs: IF : tissu cérébral de rat,
Spécificité de l'espèce: Humain, rat, souris	

Informations générales

MAP2 (microtubule-associated protein 2) is a cytoskeleton protein abundant in brain and has important role in neuronal morphogenesis. Multiple high MW and low MW MAP2 isoforms are expressed within proximal segment of axons, dendrites, and cell bodies. The expression of MAP2 is regulated in both a tissue- and developmentally specific manner. The 280 kDa MAP2B is present throughout rat brain development, and the slightly larger MAP2A appears first during the end of the second week of postnatal life. MAP2C, composed of several bands of about 70 kDa, is present during early brain development, and largely disappears from the mature brain except for the retina, olfactory bulb, and cerebellum. In addition, some isoforms with lower MW around 50-60 kDa also exist. MAP2 antibodies have been widely used to mark the neuron or dendrite formation. This antibody can recognize both high MW and low MW isoforms of MAP2.

Stockage

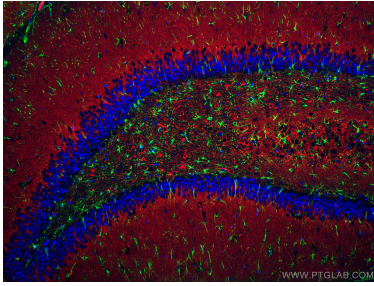
Stockage:
Stocker à -20 °C. Éviter toute exposition à la lumière. Stable pendant un an après l'expédition.
Tampon de stockage:
PBS avec glycérol à 50 %, Proclin300 à 0,05 % et BSA à 0,5 %, pH 7,3.
L'aliquotage n'est pas nécessaire pour le stockage à -20C

***** Les 20ul contiennent 0,1% de BSA.**

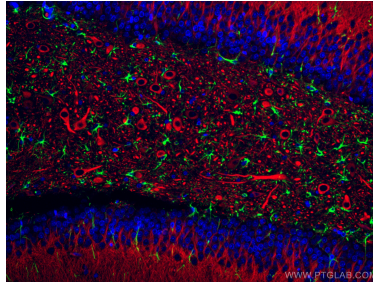
For technical support and original validation data for this product please contact:
T: 1 (888) 4PTGLAB (1-888-478-4522) (toll free in USA), or 1(312) 455-8498 (outside USA)
E: proteintech@ptglab.com
W: ptglab.com

This product is exclusively available under Proteintech Group brand and is not available to purchase from any other manufacturer.

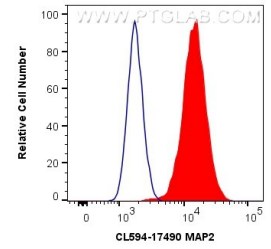
Données de validation sélectionnées



Immunofluorescent analysis of (4% PFA) fixed rat brain tissue using CoraLite®594 MAP2 antibody (CL594-17490) at dilution of 1:200, CoraLite®488 GFAP antibody (CL488-16825, green). DAPI (blue).



Immunofluorescent analysis of (4% PFA) fixed rat brain tissue using CoraLite®594 MAP2 antibody (CL594-17490) at dilution of 1:200, CoraLite®488 GFAP antibody (CL488-16825, green). DAPI (blue).



1X10⁶ Neuro-2a cells were intracellularly stained with 0.4 ug CoraLite®594 Anti-Human MAP2 (CL594-17490) (red), or 0.4 ug Control Antibody (CL594-17490) (red), or 0.4 ug Control Antibody (CL594-17490) (red), or 0.4 ug Control Antibody (CL594-17490) (red). Cells were fixed with 4% PFA and permeabilized with Flow Cytometry Perm Buffer (PF00011-C).