

À des fins de recherche uniquement

Anticorps Polyclonal de lapin anti-ARL13B



Numéro de catalogue: **CL594-17711** **Phare**

Informations de base

Numéro de catalogue: CL594-17711	Numéro d'acquisition GenBank: BC094725	Méthode de purification: Purification par affinité contre l'antigène
Taille: 100ul, Concentration: 1000 µg/ml by Nanodrop;	Identification du gène (NCBI): 200894	Dilutions recommandées: IF 1:50-1:500
Hôte: Lapin	Nom complet: ADP-ribosylation factor-like 13B	Excitation/Emission maxima wavelengths: 588 nm / 604 nm
Isotype: IgG	MW calculé 48 kDa	
Immunogen Catalog Number: AG12015		

Applications

Applications testées: IF	Contrôles positifs: IF : cellules MDCK,
Spécificité de l'espèce: canin, Humain, rat, souris	

Informations générales

ARL13B, also named as ARL2L1, is a small ciliary G protein of the Ras superfamily. Localized in the cilia, it is required for cilium biogenesis and sonic hedgehog signaling. Defects in ARL13B are the cause of Joubert syndrome (JS) which is an autosomal recessive disorder characterized by a distinctive cerebellar malformation (PMID: 19906870). CoraLite594-Conjugated ARL13B antibody can be used to mark the cilia(red). Ex: 593nm, Em: 614nm

Stockage

Stockage:
Stocker à -20 °C. Éviter toute exposition à la lumière. Stable pendant un an après l'expédition.
Tampon de stockage:
PBS avec glycérol à 50 %, Proclin300 à 0,05 % et BSA à 0,5 %, pH 7,3.
L'aliquotage n'est pas nécessaire pour le stockage à -20C

***** Les 20ul contiennent 0,1% de BSA.**

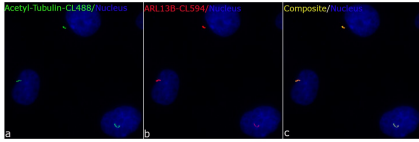
For technical support and original validation data for this product please contact:

T: 1 (888) 4PTGLAB (1-888-478-4522) (toll free in USA), or 1(312) 455-8498 (outside USA)

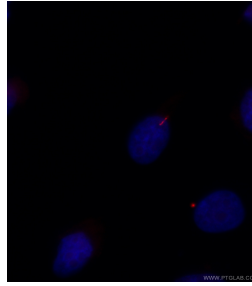
E: proteintech@ptglab.com
W: ptglab.com

This product is exclusively available under Proteintech Group brand and is not available to purchase from any other manufacturer.

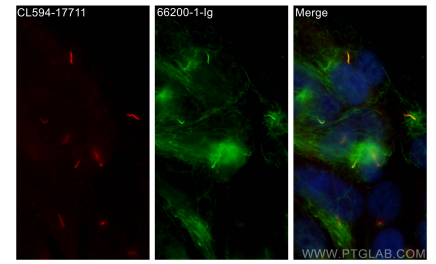
Données de validation sélectionnées



Immunofluorescent analysis of (4% PFA) fixed MDCK cells using CL594-17711 (ARL13B antibody) at dilution of 1:50. Cells were co-stained with CL488-66200 (acetylated Tubulin(Lys40) antibody).



Immunofluorescent analysis of (4% PFA) fixed MDCK cells using CL594-17711 (ARL13B antibody) at dilution of 1:50 and CoraLite594-Conjugated AffiniPure Goat Anti-Rabbit IgG(H+L).



Immunofluorescent analysis of (4% PFA) fixed hTERT-RPE1 cells using CoraLite®594 ARL13B antibody (CL594-17711) at dilution of 1:200, acetylated Tubulin(Lys40) antibody (66200-1-Ig, Clone: 7E5H8, green).