

À des fins de recherche uniquement

# Anticorps Polyclonal de lapin anti-CD133



Numéro de catalogue: **CL594-18470**

Phare

## Informations de base

Numéro de catalogue: CL594-18470	Numéro d'acquisition GenBank: BC012089	Méthode de purification: Purification par affinité contre l'antigène
Taille: 100ul , Concentration: 1000 µg/ml by Nanodrop;	Identification du gène (NCBI): 8842	Dilutions recommandées: IF 1:50-1:500
Hôte: Lapin	Nom complet: prominin 1	Excitation/Emission maxima wavelengths: 588 nm / 604 nm
Isotype: IgG	MW calculé 97 kDa	
Immunogen Catalog Number: AG13328	MW observés:	

## Applications

Applications testées: IF	Contrôles positifs: IF : tissu rénal de souris,
Spécificité de l'espèce: Humain, souris	

## Informations générales

CD133, also known as PROM1 (prominin-1) or AC133, belongs to the prominin family. CD133 is a transmembrane glycoprotein with an NH<sub>2</sub>-terminal extracellular domain, five transmembrane loops and a cytoplasmic tail. The expression of CD133 has been reported in hematopoietic stem cells, endothelial progenitor cells, neuronal and glial stem cells, suggesting the potential role of CD133 as a cell surface marker of adult stem cells. CD133 has also been reported as a marker of cancer stem cells in various human tumors.

## Stockage

**Stockage:**  
Stocker à -20 °C. Éviter toute exposition à la lumière.  
**Tampon de stockage:**  
PBS avec glycérol à 50 %, Proclin300 à 0,05 % et BSA à 0,5 %, pH 7,3.  
L'aliquotage n'est pas nécessaire pour le stockage à -20C

**\*\*\* Les 20ul contiennent 0,1% de BSA.**

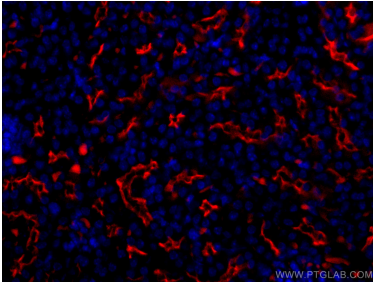
For technical support and original validation data for this product please contact:

T: 1 (888) 4PTGLAB (1-888-478-4522) (toll free in USA), or 1(312) 455-8498 (outside USA)

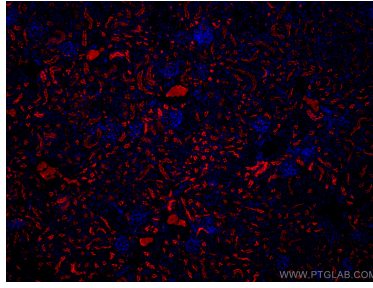
E: [proteintech@ptglab.com](mailto:proteintech@ptglab.com)  
W: [ptglab.com](http://ptglab.com)

**This product is exclusively available under Proteintech Group brand and is not available to purchase from any other manufacturer.**

## Données de validation sélectionnées



Immunofluorescent analysis of (4% PFA) fixed mouse kidney tissue using CoralLite®594 CD133 antibody (CL594-18470) at dilution of 1:200.



Immunofluorescent analysis of (4% PFA) fixed mouse kidney tissue using CoralLite®594 CD133 antibody (CL594-18470) at dilution of 1:200.