

À des fins de recherche uniquement

Anticorps Polyclonal de lapin anti-ACE2



Numéro de catalogue: **CL594-21115** **Phare**

Informations de base

Numéro de catalogue: CL594-21115	Numéro d'acquisition GenBank: BC048094	Méthode de purification: Purification par affinité contre l'antigène
Taille: 100ul , Concentration: 1000 µg/ml by Nanodrop;	Identification du gène (NCBI): 59272	Dilutions recommandées: IF 1:50-1:500
Hôte: Lapin	Nom complet: angiotensin I converting enzyme (peptidyl-dipeptidase A) 2	Excitation/Emission maxima wavelengths: 588 nm / 604 nm
Isotype: IgG	MW calculé: 805 aa, 92 kDa	
Immunogen Catalog Number: AG15455	MW observés: 120 kDa, 92 kDa	

Applications

Applications testées: IF	Contrôles positifs: IF : tissu rénal de souris,
Spécificité de l'espèce: Humain, rat, souris	

Informations générales

ACE2 (Angiotensin-converting enzyme 2), also named as ACEH, is a zinc metalloprotease of the ACE family and a critical regulator of the reninangiotensin system. ACE2 has a more restricted tissue distribution than ACE, being found predominantly in the heart, kidneys, and testes although low levels have been detected in a variety of tissues (PMID:15983030). ACE2 has been shown to be a functional receptor of the human coronaviruses SARS-CoV and SARS-CoV-2 (PMID: 32142651). The expression level and expression pattern of human ACE2 in different tissues might be critical for the susceptibility, symptoms, and outcome of 2019-nCoV/SARS-CoV-2 infection (PMID: 32133153). It can be used as a potential therapeutic target of SARS-CoV-2 (PMID: 32125455). The calculated molecular weight of ACE2 is 92kDa but it migrates to 120kDa due to N-glycosylation (PMID:16166094). Sometimes, several cleaved fragments can also be detected as 75kDa, 50 kDa or 37kDa (PMID: 29561187, 22009550, 30759273). It has 2 isoforms produced by alternative splicing. This antibody is specific to ACE2. The location of ACE2 is membrane and cytoplasm, however it accumulates in the nucleus during the mitosis (PMID: 1730413/PMID: 18292088).

Stockage

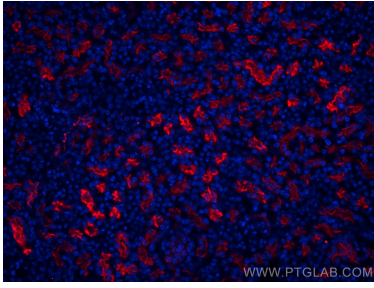
Stockage:
Stocker à -20 °C. Éviter toute exposition à la lumière.
Tampon de stockage:
PBS avec glycérol à 50 %, Proclin300 à 0,05 % et BSA à 0,5 %, pH 7,3.
L'aliquotage n'est pas nécessaire pour le stockage à -20C

***** Les 20ul contiennent 0,1% de BSA.**

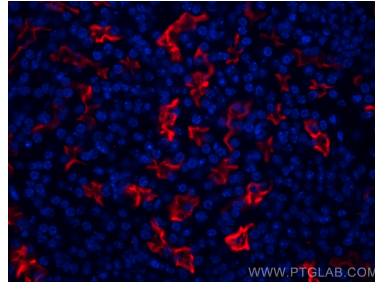
For technical support and original validation data for this product please contact:
T: 1 (888) 4PTGLAB (1-888-478-4522) (toll free in USA), or 1(312) 455-8498 (outside USA) E: proteintech@ptglab.com W: ptglab.com

This product is exclusively available under Proteintech Group brand and is not available to purchase from any other manufacturer.

Données de validation sélectionnées



Immunofluorescent analysis of (4% PFA) fixed mouse kidney tissue using Coralite®594 ACE2 antibody (CL594-21115) at dilution of 1:200.



Immunofluorescent analysis of (4% PFA) fixed mouse kidney tissue using Coralite®594 ACE2 antibody (CL594-21115) at dilution of 1:200.