

À des fins de recherche uniquement

Anticorps Polyclonal de lapin anti-TET2



Numéro de catalogue: **CL594-21207** **Phare**

Informations de base

Numéro de catalogue: CL594-21207	Numéro d'acquisition GenBank: BC150180	Méthode de purification: Purification par affinité contre l'antigène
Taille: 100ul , Concentration: 1000 µg/ml by Nanodrop;	Identification du gène (NCBI): 54790	Excitation/Emission maxima wavelengths: 588 nm / 604 nm
Hôte: Lapin	Nom complet: tet oncogene family member 2	
Isotype: IgG	MW calculé: 2002 aa, 224 kDa	
Immunogen Catalog Number: AG15583	MW observés: 130 kDa, 133 kDa, 224 kDa	

Applications

Applications testées:
FC (Intra)

Spécificité de l'espèce:
Humain, souris

Informations générales

TET2 is an enzyme which converts 5-methylcytosine (5-mC) to 5-hydroxymethylcytosine (5-hmC) in DNA and is important for normal myelopoiesis. TET2 mutations are frequently observed in myeloid malignancies, including myeloproliferative neoplasms. TET2 is broadly expressed in a variety of tissues. In healthy tissues, TET2 expression was shown to be elevated in hematopoietic cells with highest expression in granulocytes. Three isoforms of TET2 exists due to the alternative splicing. 220-250 kDa bands represent the full-length isoform; 130-133 kDa bands represent the nuclear isoforms of TET2. (PMID: 24615693) This antibody recognizes all three isoforms of TET2.

Stockage

Stockage:
Stocker à -20 °C. Éviter toute exposition à la lumière. Stable pendant un an après l'expédition.

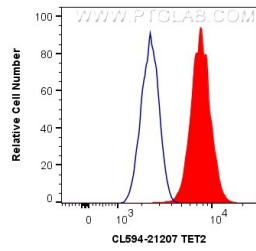
Tampon de stockage:
PBS avec glycérol à 50 %, Proclin300 à 0,05 % et BSA à 0,5 %, pH 7,3.
L'aliquotage n'est pas nécessaire pour le stockage à -20C

***** Les 20ul contiennent 0,1% de BSA.**

For technical support and original validation data for this product please contact:
T: 1 (888) 4PTGLAB (1-888-478-4522) (toll free in USA), or 1(312) 455-8498 (outside USA) E: proteintech@ptglab.com W: ptglab.com

This product is exclusively available under Proteintech Group brand and is not available to purchase from any other manufacturer.

Données de validation sélectionnées



1×10^6 HeLa cells were intracellularly stained with 0.8 μ g Coralite@594 Anti-Human TET2 (CL594-21207) (red), or 0.8 μ g Control Antibody. Cells were fixed and permeabilized with Transcription Factor Staining Buffer Kit (PF00011).