

À des fins de recherche uniquement

Anticorps Polyclonal de lapin anti-CD68



Numéro de catalogue: **CL594-25747**

1 Publications

Informations de base

Numéro de catalogue: CL594-25747	Numéro d'acquisition GenBank: BC015557	Méthode de purification: Purification par affinité contre l'antigène
Taille: 100ul , Concentration: 1000 µg/ml by Nanodrop;	Identification du gène (NCBI): 968	Dilutions recommandées: IF 1:50-1:500
Hôte: Lapin	Nom complet: CD68 molécule	Excitation/Emission maxima wavelengths: 588 nm / 604 nm
Isotype: IgG	MW calculé: 37 kDa	
Immunogen Catalog Number: AG22815	MW observés: 60 kDa	

Applications

Applications testées: FC (Intra), IF	Contrôles positifs: IF : tissu de côlon humain, tissu d'amygdale humaine
Demandes citées: IF	
Spécificité de l'espèce: Humain, souris	
Espèces citées: souris	

Informations générales

CD68 is a type I transmembrane glycoprotein that is highly expressed by human monocytes and tissue macrophages. It belongs to the lysosomal/endosomal-associated membrane glycoprotein (LAMP) family and primarily localizes to lysosomes and endosomes with a smaller fraction circulating to the cell surface. CD68 is also a member of the scavenger receptor family. It may play a role in phagocytic activities of tissue macrophages. The apparent molecular weight of CD68 is larger than calculated molecular weight due to post-translation modification.

Publications notables

Autrice	Pubmed ID	Journal	Application
Peng Zou	35392536	Front Mol Biosci	IF

Stockage

Stockage:
Stocker à -20 °C. Éviter toute exposition à la lumière.
Tampon de stockage:
PBS avec glycérol à 50 %, Proclin300 à 0,05 % et BSA à 0,5 %, pH 7,3.
L'aliquotage n'est pas nécessaire pour le stockage à -20C

*** Les 20ul contiennent 0,1% de BSA.

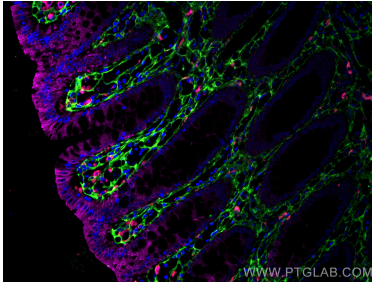
For technical support and original validation data for this product please contact:

T: 1 (888) 4PTGLAB (1-888-478-4522) (toll free in USA), or 1(312) 455-8498 (outside USA)

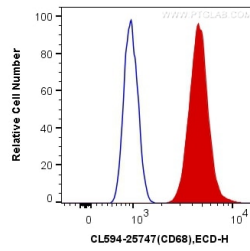
E: proteintech@ptglab.com
W: ptglab.com

This product is exclusively available under Proteintech Group brand and is not available to purchase from any other manufacturer.

Données de validation sélectionnées



Immunofluorescent analysis of (4% PFA) fixed human colon tissue using CoraLite®594 CD68 antibody (CL594-25747) at dilution of 1:200, Cytokeratin 20 antibody (60183-1-Ig, Clone: 4D10A4, Magenta), Collagen Type III (N-terminal) antibody (22734-1-AP, green).



1X10⁶ RAW 264.7 cells were intracellularly stained with 0.4 ug CoraLite®594 Anti-Human CD68 (CL594-25747) (red), or 0.4 ug Control Antibody. Cells were fixed with 4% PFA and permeabilized with Flow Cytometry Perm Buffer (PF00011-C).